



[Go to Product page](#)

Datasheet for ABIN6743393
anti-PSMG1 antibody (AA 144-193)

1 Image

Overview

Quantity:	100 µL
Target:	PSMG1
Binding Specificity:	AA 144-193
Reactivity:	Human, Cow, Dog, Rabbit, Horse
Host:	Rabbit
Clonality:	Polyclonal
Conjugate:	This PSMG1 antibody is un-conjugated
Application:	Western Blotting (WB)

Product Details

Immunogen:	Synthetic peptide located between aa144-193 of human PSMG1 (B5BUN2, NP_982257). Percent identity by BLAST analysis: Human, Chimpanzee, Elephant (100%), Gorilla, Gibbon, Baboon, Monkey, Marmoset, Mouse, Rat, Hamster (92%), Galago (90%), Dog, Bovine, Horse, Guinea pig (84%). Type of Immunogen: Synthetic peptide
Specificity:	Human PSMG1
Predicted Reactivity:	Percent identity by BLAST analysis: Human (100%) Mouse, Rat (92%) Dog, Bovine, Horse (84%).
Purification:	Immunoaffinity purified

Target Details

Target:	PSMG1
Alternative Name:	PSMG1 (PSMG1 Products)
Background:	Name/Gene ID: PSMG1 Synonyms: PSMG1, C21-LRP, C21LRP, DSCR2, PAC-1, PAC1, Leucine rich protein C21-LRP, LRPC21
Gene ID:	8624
NCBI Accession:	NP_982257
UniProt:	O95456

Application Details

Application Notes:	Approved: WB (0.2 - 1 µg/mL) Usage: Western Blot: Suggested dilution at 1 µg/mL in 5 % skim milk / PBS buffer, and HRP conjugated anti-Rabbit IgG should be diluted in 1: 50,000 - 100,000 as secondary antibody.
Comment:	Target Species of Antibody: Human
Restrictions:	For Research Use only

Handling

Format:	Lyophilized
Reconstitution:	Distilled water
Concentration:	Lot specific
Buffer:	Lyophilized from PBS with 2 % sucrose
Handling Advice:	Avoid repeat freeze-thaw cycles.
Storage:	4 °C, -20 °C
Storage Comment:	Long term: -20°C, the use of 50% glycerol is recommended if storing aliquots in -20°C for long term use (up to 1 year) Short term (less than 1 week): 4°C. Avoid freeze-thaw cycles.

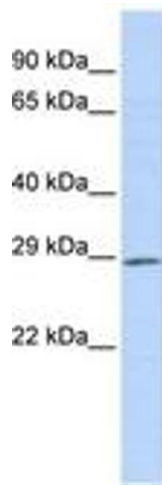


Image 1.