

Datasheet for ABIN6743398
anti-C21ORF45 antibody (N-Term)



[Go to Product page](#)

1 Image

Overview

Quantity:	100 µL
Target:	C21ORF45 (MIS18A)
Binding Specificity:	N-Term
Reactivity:	Human, Rat, Rabbit, Cow, Dog, Horse, Monkey
Host:	Rabbit
Clonality:	Polyclonal
Conjugate:	This C21ORF45 antibody is un-conjugated
Application:	Western Blotting (WB)

Product Details

Immunogen:	Synthetic peptide from N-Terminus of human MIS18A (Q9NYP9, NP_061817). Percent identity by BLAST analysis: Human, Chimpanzee, Gorilla, Gibbon, Monkey, Marmoset, Rat, Dog, Bovine, Rabbit, Horse (100%), Galago, Elephant (92%). Type of Immunogen: Synthetic peptide
Specificity:	Human MIS18A / C21orf45
Predicted Reactivity:	Percent identity by BLAST analysis:
Purification:	Immunoaffinity purified

Target Details

Target:	C21ORF45 (MIS18A)
---------	-------------------

Target Details

Alternative Name: MIS18A / B28 ([MIS18A Products](#))

Background: Name/Gene ID: MIS18A

Synonyms: MIS18A, B28, C21orf46, C21orf45, FAPP1-associated protein 1, FASP1, HMis18alpha, Protein Mis18-alpha, MIS18alpha

Gene ID: 54069

NCBI Accession: [NP_061817](#)

UniProt: [Q9NYP9](#)

Application Details

Application Notes: Approved: WB (0.2 - 1 µg/mL)

Usage: Western Blot: Suggested dilution at 1 µg/mL in 5 % skim milk / PBS buffer, and HRP conjugated anti-Rabbit IgG should be diluted in 1: 50,000 - 100,000 as secondary antibody.

Comment: Target Species of Antibody: Human

Restrictions: For Research Use only

Handling

Format: Lyophilized

Reconstitution: Distilled water

Concentration: Lot specific

Buffer: Lyophilized from PBS with 2 % sucrose

Handling Advice: Avoid repeat freeze-thaw cycles.

Storage: 4 °C, -20 °C

Storage Comment: Long term: -20°C, the use of 50% glycerol is recommended if storing aliquots in -20°C for long term use (up to 1 year)

Short term (less than 1 week): 4°C. Avoid freeze-thaw cycles.

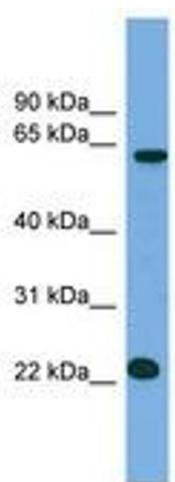


Image 1.