



Datasheet for ABIN6743403  
**anti-ACTR2 antibody (AA 324-373)**



[Go to Product page](#)

1 Image

Overview

Quantity:	100 µL
Target:	ACTR2
Binding Specificity:	AA 324-373
Reactivity:	Human, Mouse, Rat, Dog, Rabbit, Cow, Guinea Pig, Horse, Zebrafish (Danio rerio), Monkey, Xenopus laevis, Bat, Chicken, Pig
Host:	Rabbit
Clonality:	Polyclonal
Conjugate:	This ACTR2 antibody is un-conjugated
Application:	Western Blotting (WB)

Product Details

Immunogen:	Synthetic peptide located between aa324-373 of human ACTR2 (B2RCP5, NP_001005386). Percent identity by BLAST analysis: Human, Chimpanzee, Gorilla, Orangutan, Gibbon, Monkey, Marmoset, Mouse, Rat, Elephant, Dog, Bovine, Bat, Rabbit, Horse, Pig, Opossum, Guinea pig, Turkey, Zebra finch, Chicken, Platypus, Lizard, Xenopus, Salmon, Zebrafish (100%), Drosophila, Beetle (92%), Amoeba (90%), Slime mold (84%).  Type of Immunogen: Synthetic peptide
Specificity:	Human ACTR2 / ARP2
Predicted Reactivity:	Percent identity by BLAST analysis: Human, Mouse, Dog, Rabbit, Horse, Pig, Guinea pig, Chicken, Zebrafish (100%).

## Product Details

---

Purification: Immunoaffinity purified

## Target Details

---

Target: ACTR2

Alternative Name: ACTR2 / ARP2 ([ACTR2 Products](#))

Background: Name/Gene ID: ACTR2

Synonyms: ACTR2, Actin-like protein 2, Actin-related protein 2, ARP2, Actin-related protein arp2

Gene ID: 10097

NCBI Accession: [NP\\_001005386](#)

UniProt: [P61160](#)

Pathways: [RTK Signaling, Regulation of Actin Filament Polymerization](#)

## Application Details

---

Application Notes: Approved: WB (0.2 - 1 µg/mL)

Usage: Western Blot: Suggested dilution at 1 µg/mL in 5 % skim milk / PBS buffer, and HRP conjugated anti-Rabbit IgG should be diluted in 1: 50,000 - 100,000 as secondary antibody.

Comment: Target Species of Antibody: Human

Restrictions: For Research Use only

## Handling

---

Format: Lyophilized

Reconstitution: Distilled water

Concentration: Lot specific

Buffer: Lyophilized from PBS with 2 % sucrose

Handling Advice: Avoid repeat freeze-thaw cycles.

Storage: 4 °C, -20 °C

Storage Comment: Long term: -20°C, the use of 50% glycerol is recommended if storing aliquots in -20°C for long term use (up to 1 year)

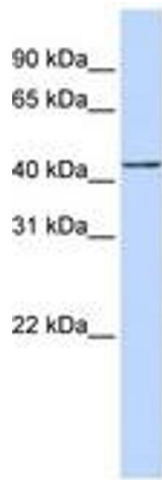
## Handling

---

Short term (less than 1 week): 4°C. Avoid freeze-thaw cycles.

## Images

---



**Image 1.**