

Datasheet for ABIN6743408
anti-SMC4 antibody (AA 36-85)[Go to Product page](#)

1 Image

Overview

Quantity:	100 µL
Target:	SMC4
Binding Specificity:	AA 36-85
Reactivity:	Human, Mouse, Rat, Guinea Pig, Dog, Horse, Cow, Pig
Host:	Rabbit
Clonality:	Polyclonal
Conjugate:	This SMC4 antibody is un-conjugated
Application:	Western Blotting (WB)

Product Details

Immunogen:	Synthetic peptide located between aa36-85 of human SMC4 (Q9NTJ3, NP_001002800). Percent identity by BLAST analysis: Human, Chimpanzee, Gorilla, Gibbon, Monkey, Mouse (100%), Galago, Marmoset, Rabbit (92%), Panda, Dog, Bovine, Bat, Horse, Pig (85%), Rat (78%). Type of Immunogen: Synthetic peptide
Specificity:	Human SMC4
Predicted Reactivity:	Percent identity by BLAST analysis: Human, Mouse (100%) Rabbit (92%) Dog, Bovine, Horse, Pig (85%).
Purification:	Immunoaffinity purified

Target Details

Target:	SMC4
Alternative Name:	SMC4 (SMC4 Products)
Background:	Name/Gene ID: SMC4 Synonyms: SMC4, HCAP-C, SMC protein 4, SMC4L1, SMC-4, XCAP-C homolog, CAP-C, CAPC
Gene ID:	10051
NCBI Accession:	NP_001002800
UniProt:	Q9NTJ3

Application Details

Application Notes:	Approved: WB (0.2 - 1 µg/mL) Usage: Western Blot: Suggested dilution at 1 µg/mL in 5 % skim milk / PBS buffer, and HRP conjugated anti-Rabbit IgG should be diluted in 1: 50,000 - 100,000 as secondary antibody.
Comment:	Target Species of Antibody: Human
Restrictions:	For Research Use only

Handling

Format:	Lyophilized
Reconstitution:	Distilled water
Concentration:	Lot specific
Buffer:	Lyophilized from PBS with 2 % sucrose
Handling Advice:	Avoid repeat freeze-thaw cycles.
Storage:	4 °C, -20 °C
Storage Comment:	Long term: -20°C, the use of 50% glycerol is recommended if storing aliquots in -20°C for long term use (up to 1 year) Short term (less than 1 week): 4°C. Avoid freeze-thaw cycles.

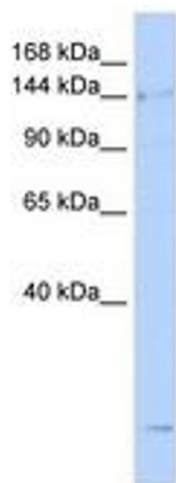


Image 1.