

Datasheet for ABIN6743414  
**anti-MTHFD2 antibody (AA 72-121)**[Go to Product page](#)

## 1 Image

## Overview

|                      |   |
|----------------------|---|
| Quantity:            | 100 µL  |
| Target:              | MTHFD2  |
| Binding Specificity: | AA 72-121   |
| Reactivity:          | Human, Dog, Rabbit, Guinea Pig, Horse, Bat, Monkey, Chicken |
| Host:                | Rabbit  |
| Clonality:           | Polyclonal  |
| Conjugate:           | This MTHFD2 antibody is un-conjugated                       |
| Application:         | Western Blotting (WB)                                       |

## Product Details

|                       |   |
|-----------------------|---|
| Immunogen:            | Synthetic peptide located between aa72-121 of human MTHFD2 (P13995, NP_006627).<br>Percent identity by BLAST analysis: Human, Gibbon, Galago, Marmoset, Elephant, Panda, Dog, Bat, Rabbit, Horse, Guinea pig, Turkey, Zebra finch, Chicken, Stickleback (100%), Mouse, Rat, Hamster, Bovine, Opossum, Xenopus, Zebrafish (92%), Gorilla, Smelt (85%).<br><br>Type of Immunogen: Synthetic peptide |
| Specificity:          | Human MTHFD2  |
| Predicted Reactivity: | Percent identity by BLAST analysis: Human, Dog, Horse, Guinea pig (100%) Mouse, Rat, Xenopus, Zebrafish (92%).  |
| Purification:         | Immunoaffinity purified   |

## Target Details

|                   |   |
|-------------------|---|
| Target:           | MTHFD2  |
| Alternative Name: | MTHFD2 ( <a href="#">MTHFD2 Products</a> )          |
| Background:       | Name/Gene ID: MTHFD2<br><br>Synonyms: MTHFD2, NMDMC |
| Gene ID:          | 10797   |
| NCBI Accession:   | <a href="#">NP_006627</a>                           |
| UniProt:          | <a href="#">P13995</a>                              |

## Application Details

|                    |  |
|--------------------|--|
| Application Notes: | Approved: WB (0.2 - 1 µg/mL)<br><br>Usage: Western Blot: Suggested dilution at 1 µg/mL in 5 % skim milk / PBS buffer, and HRP conjugated anti-Rabbit IgG should be diluted in 1: 50,000 - 100,000 as secondary antibody. |
| Comment:           | Target Species of Antibody: Human  |
| Restrictions:      | For Research Use only  |

## Handling

|                  |   |
|------------------|---|
| Format:          | Lyophilized   |
| Reconstitution:  | Distilled water   |
| Concentration:   | Lot specific  |
| Buffer:          | Lyophilized from PBS with 2 % sucrose   |
| Handling Advice: | Avoid repeat freeze-thaw cycles.  |
| Storage:         | 4 °C, -20 °C  |
| Storage Comment: | Long term: -20°C, the use of 50% glycerol is recommended if storing aliquots in -20°C for long term use (up to 1 year)<br><br>Short term (less than 1 week): 4°C. Avoid freeze-thaw cycles. |

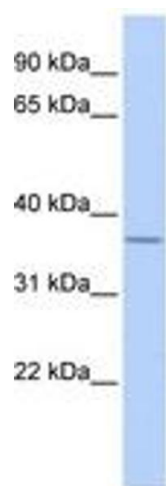


Image 1.