

Datasheet for ABIN6743421
anti-NCAM2 antibody (AA 575-624)[Go to Product page](#)

1 Image

Overview

Quantity:	100 µL
Target:	NCAM2
Binding Specificity:	AA 575-624
Reactivity:	Human, Mouse, Rat, Dog, Cow, Horse, Rabbit, Guinea Pig, Monkey, Bat, Pig, Xenopus laevis
Host:	Rabbit
Clonality:	Polyclonal
Conjugate:	This NCAM2 antibody is un-conjugated
Application:	Western Blotting (WB)

Product Details

Immunogen:	Synthetic peptide located between aa575-624 of human NCAM2 (O15394, NP_004531). Percent identity by BLAST analysis: Human, Chimpanzee, Gibbon, Monkey, Galago, Marmoset, Mouse, Rat, Elephant, Dog, Bovine, Bat, Rabbit, Horse, Pig, Opossum, Guinea pig, Platypus, Xenopus (100%), Chicken, Lizard (92%), Stickleback (81%). Type of Immunogen: Synthetic peptide
Specificity:	Human NCAM2
Predicted Reactivity:	Percent identity by BLAST analysis: Human, Mouse, Rat, Dog, Bovine, Rabbit, Horse, Guinea pig (100%) Chicken (92%).
Purification:	Immunoaffinity purified

Target Details

Target:	NCAM2
Alternative Name:	NCAM2 (NCAM2 Products)
Background:	Name/Gene ID: NCAM2 Family: Immunoglobulin Synonyms: NCAM2, N-CAM-2, NCAM-2, NCAM21
Gene ID:	4685
NCBI Accession:	NP_004531
UniProt:	O15394

Application Details

Application Notes:	Approved: WB (0.2 - 1 µg/mL) Usage: Western Blot: Suggested dilution at 1 µg/mL in 5 % skim milk / PBS buffer, and HRP conjugated anti-Rabbit IgG should be diluted in 1: 50,000 - 100,000 as secondary antibody.
Comment:	Target Species of Antibody: Human
Restrictions:	For Research Use only

Handling

Format:	Lyophilized
Reconstitution:	Distilled water
Concentration:	Lot specific
Buffer:	Lyophilized from PBS with 2 % sucrose
Handling Advice:	Avoid repeat freeze-thaw cycles.
Storage:	4 °C, -20 °C
Storage Comment:	Long term: -20°C, the use of 50% glycerol is recommended if storing aliquots in -20°C for long term use (up to 1 year) Short term (less than 1 week): 4°C. Avoid freeze-thaw cycles.

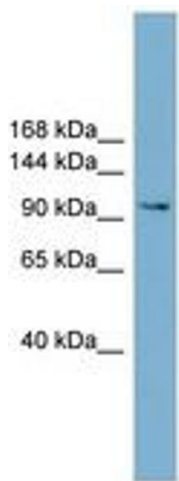


Image 1.