

Datasheet for ABIN6743423
anti-LARGE antibody (AA 683-732)[Go to Product page](#)

1 Image

Overview

Quantity:	100 µL
Target:	LARGE
Binding Specificity:	AA 683-732
Reactivity:	Human, Mouse, Cow, Dog, Rat, Horse, Rabbit, Guinea Pig, Zebrafish (Danio rerio)
Host:	Rabbit
Clonality:	Polyclonal
Conjugate:	This LARGE antibody is un-conjugated
Application:	Western Blotting (WB)

Product Details

Immunogen:	Synthetic peptide located between aa683-732 of human LARGE (O95461, NP_004728). Percent identity by BLAST analysis: Human, Chimpanzee, Orangutan, Monkey, Galago, Marmoset, Mouse, Rat, Hamster, Elephant, Panda, Bovine, Bat, Rabbit, Horse, Opossum, Guinea pig, Turkey, Zebra finch, Chicken, Platypus, Lizard, Xenopus, Stickleback, Zebrafish (100%). Type of Immunogen: Synthetic peptide
Specificity:	Human LARGE
Predicted Reactivity:	Percent identity by BLAST analysis: Human, Mouse, Rat, Bovine, Rabbit, Horse, Guinea pig, Chicken, Zebrafish (100%).
Purification:	Immunoaffinity purified

Target Details

Target:	LARGE
Alternative Name:	LARGE (LARGE Products)
Background:	Name/Gene ID: LARGE Synonyms: LARGE, KIAA0609, LARGE1, Like-glycosyltransferase, MDDGA6, MDC1D, MDDGB6
Gene ID:	9215
NCBI Accession:	NP_004728
UniProt:	O95461

Application Details

Application Notes:	Approved: WB (0.2 - 1 µg/mL) Usage: Western Blot: Suggested dilution at 1 µg/mL in 5 % skim milk / PBS buffer, and HRP conjugated anti-Rabbit IgG should be diluted in 1: 50,000 - 100,000 as secondary antibody.
Comment:	Target Species of Antibody: Human
Restrictions:	For Research Use only

Handling

Format:	Lyophilized
Reconstitution:	Distilled water
Concentration:	Lot specific
Buffer:	Lyophilized from PBS with 2 % sucrose
Handling Advice:	Avoid repeat freeze-thaw cycles.
Storage:	4 °C, -20 °C
Storage Comment:	Long term: -20°C, the use of 50% glycerol is recommended if storing aliquots in -20°C for long term use (up to 1 year) Short term (less than 1 week): 4°C. Avoid freeze-thaw cycles.

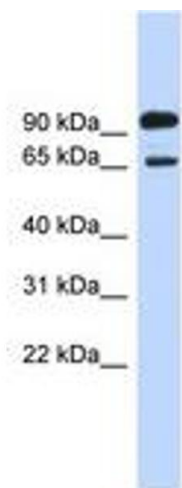


Image 1.