



[Go to Product page](#)

Datasheet for ABIN6743427
anti-SSPN antibody (AA 144-193)

1 Image

Overview

Quantity:	100 µL
Target:	SSPN
Binding Specificity:	AA 144-193
Reactivity:	Human, Rat, Pig, Rabbit, Cow, Bat, Hamster, Monkey
Host:	Rabbit
Clonality:	Polyclonal
Conjugate:	This SSPN antibody is un-conjugated
Application:	Western Blotting (WB)

Product Details

Immunogen:	Synthetic peptide located between aa144-193 of human SSPN (Q14714, NP_005077). Percent identity by BLAST analysis: Human, Chimpanzee, Gorilla, Gibbon, Monkey, Hamster, Elephant, Panda, Bovine, Bat, Rabbit, Pig (100%), Galago, Mouse, Dog, Guinea pig (92%), Rat, Platypus (85%), Turkey (81%). Type of Immunogen: Synthetic peptide
Specificity:	Human SSPN
Predicted Reactivity:	Percent identity by BLAST analysis: Human, Bovine, Rabbit (100%) Mouse, Dog, Guinea pig (92%) Rat (85%).
Purification:	Immunoaffinity purified

Target Details

Target:	SSPN
Alternative Name:	SSPN / Sarcospan (SSPN Products)
Background:	Name/Gene ID: SSPN Subfamily: RAS oncogene Synonyms: SSPN, DAGA5, Kirsten-ras-associated protein, Kras oncogene-associated gene, Microspan, NSPN, Kras oncogene-associated, Nanospan, SPN1, SPN2, KRAG, Sarcospan
Gene ID:	8082
NCBI Accession:	NP_005077
UniProt:	Q14714

Application Details

Application Notes:	Approved: WB (0.2 - 1 µg/mL) Usage: Western Blot: Suggested dilution at 1 µg/mL in 5 % skim milk / PBS buffer, and HRP conjugated anti-Rabbit IgG should be diluted in 1: 50,000 - 100,000 as secondary antibody.
Comment:	Target Species of Antibody: Human
Restrictions:	For Research Use only

Handling

Format:	Lyophilized
Reconstitution:	Distilled water
Concentration:	Lot specific
Buffer:	Lyophilized from PBS with 2 % sucrose
Handling Advice:	Avoid repeat freeze-thaw cycles.
Storage:	4 °C, -20 °C
Storage Comment:	Long term: -20°C, the use of 50% glycerol is recommended if storing aliquots in -20°C for long term use (up to 1 year) Short term (less than 1 week): 4°C. Avoid freeze-thaw cycles.

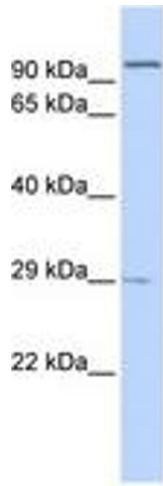


Image 1.