



[Go to Product page](#)

Datasheet for ABIN6743431  
**anti-ALDH6A1 antibody (C-Term)**

1 Image

Overview

Quantity:	100 µL
Target:	ALDH6A1
Binding Specificity:	C-Term
Reactivity:	Human, Mouse, Rat, Dog, Pig, Rabbit, Horse, Monkey, Bat
Host:	Rabbit
Clonality:	Polyclonal
Conjugate:	This ALDH6A1 antibody is un-conjugated
Application:	Western Blotting (WB)

Product Details

Immunogen:	Synthetic peptide from C-Terminus of human ALDH6A1 (Q02252, NP_005580). Percent identity by BLAST analysis: Human, Chimpanzee, Gorilla, Orangutan, Gibbon, Monkey, Galago, Marmoset, Mouse, Rat, Panda, Dog, Bat, Rabbit, Horse, Pig, Opossum, Platypus (100%), Elephant, Bovine, Guinea pig, Zebra finch, Lizard, Xenopus, Salmon, Stickleback, Zebrafish (92%), Turkey, Chicken (85%).  Type of Immunogen: Synthetic peptide
Specificity:	Human ALDH6A1
Predicted Reactivity:	Percent identity by BLAST analysis: Human, Mouse, Rat, Dog, Rabbit, Pig (100%) Guinea pig, Xenopus, Zebrafish (92%) Chicken (85%).
Purification:	Immunoaffinity purified

## Target Details

---

Target:	ALDH6A1
Alternative Name:	ALDH6A1 ( <a href="#">ALDH6A1 Products</a> )
Background:	Name/Gene ID: ALDH6A1  Synonyms: ALDH6A1, MMSDH, MMSADHA
Gene ID:	4329
NCBI Accession:	<a href="#">NP_005580</a>
UniProt:	<a href="#">Q02252</a>
Pathways:	<a href="#">Brown Fat Cell Differentiation</a>

## Application Details

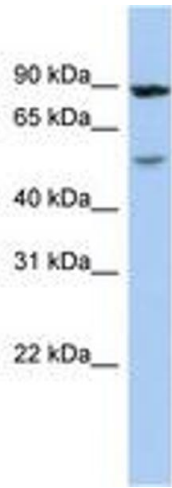
---

Application Notes:	Approved: WB (0.2 - 1 µg/mL)  Usage: Western Blot: Suggested dilution at 1 µg/mL in 5 % skim milk / PBS buffer, and HRP conjugated anti-Rabbit IgG should be diluted in 1: 50,000 - 100,000 as secondary antibody.
Comment:	Target Species of Antibody: Human
Restrictions:	For Research Use only

## Handling

---

Format:	Lyophilized
Reconstitution:	Distilled water
Concentration:	Lot specific
Buffer:	Lyophilized from PBS with 2 % sucrose
Handling Advice:	Avoid repeat freeze-thaw cycles.
Storage:	4 °C,-20 °C
Storage Comment:	Long term: -20°C, the use of 50% glycerol is recommended if storing aliquots in -20°C for long term use (up to 1 year)  Short term (less than 1 week): 4°C. Avoid freeze-thaw cycles.



**Image 1.**