

Datasheet for ABIN6743433
anti-CRTAP antibody (AA 107-156)[Go to Product page](#)

1 Image

Overview

Quantity:	100 µL
Target:	CRTAP
Binding Specificity:	AA 107-156
Reactivity:	Human, Mouse, Rat, Cow, Dog, Guinea Pig, Horse, Rabbit, Zebrafish (Danio rerio), Bat, Monkey, Xenopus laevis
Host:	Rabbit
Clonality:	Polyclonal
Conjugate:	This CRTAP antibody is un-conjugated
Application:	Western Blotting (WB)

Product Details

Immunogen:	Synthetic peptide located between aa107-156 of human CRTAP (O75718, NP_006362). Percent identity by BLAST analysis: Human, Chimpanzee, Gorilla, Gibbon, Monkey, Galago, Marmoset, Mouse, Rat, Dog, Bovine, Bat, Rabbit, Horse, Opossum, Guinea pig, Xenopus, Frog (100%), Chicken, Stickleback, Pike, Zebrafish (85%). Type of Immunogen: Synthetic peptide
Specificity:	Human CRTAP
Predicted Reactivity:	Percent identity by BLAST analysis: Human, Mouse, Dog, Bovine, Rabbit, Horse, Guinea pig (100%) Chicken, Zebrafish (85%).
Purification:	Immunoaffinity purified

Target Details

Target:	CRTAP
Alternative Name:	CASP / CRTAP (CRTAP Products)
Background:	Name/Gene ID: CRTAP Synonyms: CRTAP, CASP, Cartilage-associated protein, LEPREL3, Leprecan-like 3, OI7, Cartilage associated protein
Gene ID:	10491
NCBI Accession:	NP_006362

Application Details

Application Notes:	Approved: WB (0.2 - 1 µg/mL) Usage: Western Blot: Suggested dilution at 1 µg/mL in 5 % skim milk / PBS buffer, and HRP conjugated anti-Rabbit IgG should be diluted in 1: 50,000 - 100,000 as secondary antibody.
Comment:	Target Species of Antibody: Human
Restrictions:	For Research Use only

Handling

Format:	Lyophilized
Reconstitution:	Distilled water
Concentration:	Lot specific
Buffer:	Lyophilized from PBS with 2 % sucrose
Handling Advice:	Avoid repeat freeze-thaw cycles.
Storage:	4 °C, -20 °C
Storage Comment:	Long term: -20°C, the use of 50% glycerol is recommended if storing aliquots in -20°C for long term use (up to 1 year) Short term (less than 1 week): 4°C. Avoid freeze-thaw cycles.

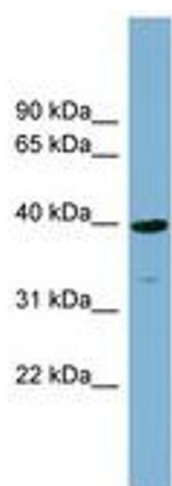


Image 1.