



## Datasheet for ABIN6743435 **anti-KDEL3 antibody (AA 71-120)**



[Go to Product page](#)

### 1 Image

#### Overview

Quantity:	100 µL
Target:	KDEL3 (kDEL3)
Binding Specificity:	AA 71-120
Reactivity:	Human, Horse, Pig, Rabbit, Cow, Dog, Monkey, Bat
Host:	Rabbit
Clonality:	Polyclonal
Conjugate:	This KDEL3 antibody is un-conjugated
Application:	Western Blotting (WB)

#### Product Details

Immunogen:	Synthetic peptide located between aa71-120 of human KDEL3 (O43731, NP_006846). Percent identity by BLAST analysis: Human, Chimpanzee, Gorilla, Monkey, Galago, Marmoset, Elephant, Dog, Bovine, Bat, Rabbit, Horse, Pig (100%), Mouse, Rat, Guinea pig, Turkey, Zebra finch, Chicken (92%), Xenopus (85%), Opossum, Stickleback (83%).  Type of Immunogen: Synthetic peptide
Specificity:	Human KDEL3
Predicted Reactivity:	Percent identity by BLAST analysis: Dog, Bovine, Pig (100%) Rat, Chicken (92%).
Purification:	Immunoaffinity purified

## Target Details

---

Target: KDEL3 (kDEL3)

Alternative Name: KDEL3 ([kDEL3 Products](#))

Background: Name/Gene ID: KDEL3

Synonyms: KDEL3

Gene ID: 11015

NCBI Accession: [NP\\_006846](#)

UniProt: [O43731](#)

Pathways: [ER-Nucleus Signaling, Maintenance of Protein Location](#)

## Application Details

---

Application Notes: Approved: WB (0.2 - 1 µg/mL)

Usage: Western Blot: Suggested dilution at 1 µg/mL in 5 % skim milk / PBS buffer, and HRP conjugated anti-Rabbit IgG should be diluted in 1: 50,000 - 100,000 as secondary antibody.

Comment: Target Species of Antibody: Human

Restrictions: For Research Use only

## Handling

---

Format: Lyophilized

Reconstitution: Distilled water

Concentration: Lot specific

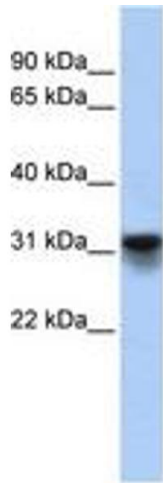
Buffer: Lyophilized from PBS with 2 % sucrose

Handling Advice: Avoid repeat freeze-thaw cycles.

Storage: 4 °C, -20 °C

Storage Comment: Long term: -20°C, the use of 50% glycerol is recommended if storing aliquots in -20°C for long term use (up to 1 year)

Short term (less than 1 week): 4°C. Avoid freeze-thaw cycles.



**Image 1.**