



[Go to Product page](#)

Datasheet for ABIN6743436
anti-BTN2A1 antibody (AA 107-156)

1 Image

Overview

Quantity:	100 µL
Target:	BTN2A1
Binding Specificity:	AA 107-156
Reactivity:	Human, Monkey
Host:	Rabbit
Clonality:	Polyclonal
Conjugate:	This BTN2A1 antibody is un-conjugated
Application:	Western Blotting (WB)

Product Details

Immunogen:	Synthetic peptide located between aa107-156 of human BTN2A1 (Q7KYR7, NP_008980). Percent identity by BLAST analysis: Human, Chimpanzee, Gorilla, Orangutan, Gibbon, Monkey, Marmoset, Opossum (100%), Bovine (92%), Mouse, Rat (90%), Guinea pig (85%), Horse (81%). Type of Immunogen: Synthetic peptide
Specificity:	Human BTN2A1
Predicted Reactivity:	Percent identity by BLAST analysis: Human (100%).
Purification:	Immunoaffinity purified

Target Details

Target:	BTN2A1
---------	--------

Target Details

Alternative Name: [BTN2A1 \(BTN2A1 Products\)](#)

Background: Name/Gene ID: BTN2A1

Synonyms: [BTN2A1](#), [BT2.1](#), [BTF1](#), [Butyrophilin BTF1](#), [BK14H9.1](#), [DJ3E1.1](#)

Gene ID: 11120

NCBI Accession: [NP_008980](#)

UniProt: [Q7KYR7](#)

Pathways: [Activated T Cell Proliferation](#)

Application Details

Application Notes: Approved: WB (0.2 - 1 µg/mL)

Usage: Western Blot: Suggested dilution at 1 µg/mL in 5 % skim milk / PBS buffer, and HRP conjugated anti-Rabbit IgG should be diluted in 1: 50,000 - 100,000 as secondary antibody.

Comment: Target Species of Antibody: Human

Restrictions: For Research Use only

Handling

Format: Lyophilized

Reconstitution: Distilled water

Concentration: Lot specific

Buffer: Lyophilized from PBS with 2 % sucrose

Handling Advice: Avoid repeat freeze-thaw cycles.

Storage: 4 °C, -20 °C

Storage Comment: Long term: -20°C, the use of 50% glycerol is recommended if storing aliquots in -20°C for long term use (up to 1 year)

Short term (less than 1 week): 4°C. Avoid freeze-thaw cycles.

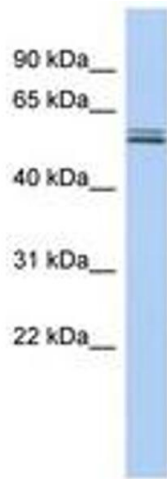


Image 1.