



[Go to Product page](#)

Datasheet for ABIN6743439  
**anti-ATP1B4 antibody (AA 215-264)**

1 Image

Overview

Quantity:	100 µL
Target:	ATP1B4
Binding Specificity:	AA 215-264
Reactivity:	Rat, Human, Mouse, Cow, Rabbit, Dog, Guinea Pig, Horse, Monkey, Bat, Pig
Host:	Rabbit
Clonality:	Polyclonal
Conjugate:	This ATP1B4 antibody is un-conjugated
Application:	Western Blotting (WB)

Product Details

Immunogen:	Synthetic peptide located between aa215-264 of human ATP1B4 (Q9UN42, NP_036201). Percent identity by BLAST analysis: Human, Chimpanzee, Gorilla, Gibbon, Monkey, Galago, Marmoset, Mouse, Rat, Elephant, Dog, Bovine, Bat, Rabbit, Horse, Pig, Guinea pig (100%), Opossum, Platypus (92%), Xenopus (84%).  Type of Immunogen: Synthetic peptide
Specificity:	Human ATP1B4
Predicted Reactivity:	Percent identity by BLAST analysis: Human, Mouse, Rat, Dog, Rabbit, Guinea pig (100%).
Purification:	Immunoaffinity purified

## Target Details

---

Target:	ATP1B4
Alternative Name:	ATP1B4 ( <a href="#">ATP1B4 Products</a> )
Background:	Name/Gene ID: ATP1B4 Subfamily: ATPase - P type, beta subunit Family: Transporter  Synonyms: ATP1B4, Protein ATP1B4, Sodium/potassium-ATPase beta-m, X,K-ATPase beta-m subunit, X,K-ATPase subunit beta-m
Gene ID:	23439
NCBI Accession:	<a href="#">NP_036201</a>
UniProt:	<a href="#">Q9UN42</a>
Pathways:	<a href="#">Thyroid Hormone Synthesis</a> , <a href="#">Proton Transport</a>

## Application Details

---

Application Notes:	Approved: WB (0.2 - 1 µg/mL)  Usage: Western Blot: Suggested dilution at 1 µg/mL in 5 % skim milk / PBS buffer, and HRP conjugated anti-Rabbit IgG should be diluted in 1: 50,000 - 100,000 as secondary antibody.
Comment:	Target Species of Antibody: Human
Restrictions:	For Research Use only

## Handling

---

Format:	Lyophilized
Reconstitution:	Distilled water
Concentration:	Lot specific
Buffer:	Lyophilized from PBS with 2 % sucrose
Handling Advice:	Avoid repeat freeze-thaw cycles.
Storage:	4 °C,-20 °C
Storage Comment:	Long term: -20°C, the use of 50% glycerol is recommended if storing aliquots in -20°C for long term use (up to 1 year)

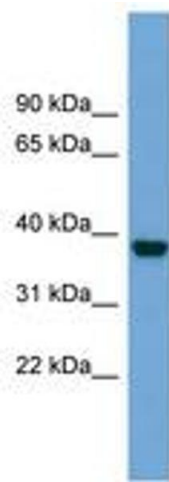
## Handling

---

Short term (less than 1 week): 4°C. Avoid freeze-thaw cycles.

## Images

---



**Image 1.**