

Datasheet for ABIN6743440
anti-BACE2 antibody (AA 287-336)[Go to Product page](#)

1 Image

Overview

Quantity:	100 µL
Target:	BACE2
Binding Specificity:	AA 287-336
Reactivity:	Human, Rat, Mouse, Guinea Pig, Cow, Dog, Horse, Monkey, Pig, Bat, Chicken
Host:	Rabbit
Clonality:	Polyclonal
Conjugate:	This BACE2 antibody is un-conjugated
Application:	Western Blotting (WB)

Product Details

Immunogen:	Synthetic peptide located between aa287-336 of human BACE2 (Q9Y5Z0, NP_620477). Percent identity by BLAST analysis: Human, Chimpanzee, Gorilla, Gibbon, Monkey, Galago, Marmoset, Mouse, Rat, Elephant, Dog, Bovine, Bat, Horse, Pig, Guinea pig, Turkey, Zebra finch, Chicken (100%), Opossum, Platypus, Lizard, Stickleback, Zebrafish (92%), Xenopus (91%), Hamster, Panda, Rabbit (84%). Type of Immunogen: Synthetic peptide
Specificity:	Human BACE2
Predicted Reactivity:	Percent identity by BLAST analysis: Human, Mouse, Rat, Dog, Horse, Pig, Guinea pig, Chicken (100%) Xenopus (91%).
Purification:	Immunoaffinity purified

Target Details

Target:	BACE2
Alternative Name:	BACE2 (BACE2 Products)
Background:	Name/Gene ID: BACE2 Subfamily: Aspartic A1 Family: Protease Synonyms: BACE2, 56 kDa aspartic-like protease, AEPLC, ALP56, Aspartic-like protease 56 kDa, APL56, BAE2, Beta-secretase 2, ASP21, CDA13, DRAP, Memapsin-1, Asp 1, ASP1, Aspartyl protease 1, Theta-secretase, Beta secretase 2, CEAP1, Down region aspartic protease
Gene ID:	25825
NCBI Accession:	NP_620477
UniProt:	Q9Y5Z0

Application Details

Application Notes:	Approved: WB (0.2 - 1 µg/mL) Usage: Western Blot: Suggested dilution at 1 µg/mL in 5 % skim milk / PBS buffer, and HRP conjugated anti-Rabbit IgG should be diluted in 1: 50,000 - 100,000 as secondary antibody.
Comment:	Target Species of Antibody: Human
Restrictions:	For Research Use only

Handling

Format:	Lyophilized
Reconstitution:	Distilled water
Concentration:	Lot specific
Buffer:	Lyophilized from PBS with 2 % sucrose
Handling Advice:	Avoid repeat freeze-thaw cycles.
Storage:	4 °C, -20 °C
Storage Comment:	Long term: -20°C, the use of 50% glycerol is recommended if storing aliquots in -20°C for long term use (up to 1 year)

Handling

Short term (less than 1 week): 4°C. Avoid freeze-thaw cycles.

Images

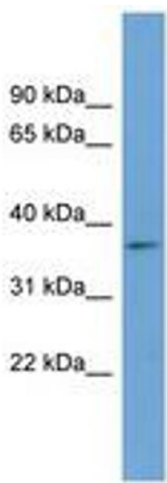


Image 1.