



[Go to Product page](#)

Datasheet for ABIN6743449
anti-ARMCX3 antibody (AA 251-300)

1 Image

Overview

Quantity:	100 µL
Target:	ARMCX3
Binding Specificity:	AA 251-300
Reactivity:	Human, Mouse, Rat, Cow, Pig, Rabbit, Horse, Bat
Host:	Rabbit
Clonality:	Polyclonal
Conjugate:	This ARMCX3 antibody is un-conjugated
Application:	Western Blotting (WB)

Product Details

Immunogen:	Synthetic peptide located between aa251-300 of human ARMCX3 (Q9UH62, NP_057691). Percent identity by BLAST analysis: Human, Chimpanzee, Gorilla, Orangutan, Monkey, Mouse, Rat, Elephant, Panda, Bovine, Bat, Rabbit, Horse, Pig (100%), Marmoset, Hamster, Dog (92%). Type of Immunogen: Synthetic peptide
Specificity:	Human ARMCX3
Predicted Reactivity:	Percent identity by BLAST analysis: Bovine, Rabbit, Pig (100%) Dog (92%).
Purification:	Immunoaffinity purified

Target Details

Target:	ARMCX3
---------	--------

Target Details

Alternative Name:	ARMCX3 (ARMCX3 Products)
Background:	Name/Gene ID: ARMCX3 Synonyms: ARMCX3, ALEX3, DJ545K15.2, Protein ALEX3
Gene ID:	51566
NCBI Accession:	NP_057691
UniProt:	Q9UH62

Application Details

Application Notes:	Approved: WB (0.2 - 1 µg/mL) Usage: Western Blot: Suggested dilution at 1 µg/mL in 5 % skim milk / PBS buffer, and HRP conjugated anti-Rabbit IgG should be diluted in 1: 50,000 - 100,000 as secondary antibody.
Comment:	Target Species of Antibody: Human
Restrictions:	For Research Use only

Handling

Format:	Lyophilized
Reconstitution:	Distilled water
Concentration:	Lot specific
Buffer:	Lyophilized from PBS with 2 % sucrose
Handling Advice:	Avoid repeat freeze-thaw cycles.
Storage:	4 °C,-20 °C
Storage Comment:	Long term: -20°C, the use of 50% glycerol is recommended if storing aliquots in -20°C for long term use (up to 1 year) Short term (less than 1 week): 4°C. Avoid freeze-thaw cycles.

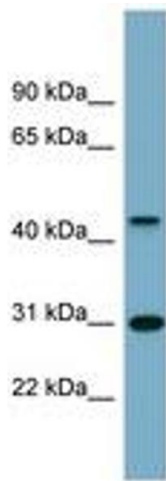


Image 1.