



Datasheet for ABIN6743460
anti-NKX1-1 antibody (AA 324-368)



[Go to Product page](#)

1 Image

Overview

Quantity:	100 µL
Target:	NKX1-1
Binding Specificity:	AA 324-368
Reactivity:	Human
Host:	Rabbit
Clonality:	Polyclonal
Conjugate:	This NKX1-1 antibody is un-conjugated
Application:	Western Blotting (WB)

Product Details

Immunogen:	Synthetic peptide located between aa324-368 of human NKX1-1. Type of Immunogen: Synthetic peptide
Specificity:	Human NKX1-1
Predicted Reactivity:	Percent identity by BLAST analysis:
Purification:	Immunoaffinity purified

Target Details

Target:	NKX1-1
Alternative Name:	NKX1-1 (NKX1-1 Products)

Target Details

Background:	Name/Gene ID: NKX1-1 Synonyms: NKX1-1, Homeobox protein 153, HPX153, Homeobox protein SAX-2, NK1 homeobox 1, HPX-153, HPX-153 homeobox, NKX-1.1, HSPX153, SAX2
Gene ID:	54729
Pathways:	Regulation of Carbohydrate Metabolic Process

Application Details

Application Notes:	Approved: WB (0.2 - 1 µg/mL) Usage: Western Blot: Suggested dilution at 1 µg/mL in 5 % skim milk / PBS buffer, and HRP conjugated anti-Rabbit IgG should be diluted in 1: 50,000 - 100,000 as secondary antibody.
Comment:	Target Species of Antibody: Human
Restrictions:	For Research Use only

Handling

Format:	Lyophilized
Reconstitution:	Distilled water
Concentration:	Lot specific
Buffer:	Lyophilized from PBS with 2 % sucrose
Handling Advice:	Avoid repeat freeze-thaw cycles.
Storage:	4 °C, -20 °C
Storage Comment:	Long term: -20°C, the use of 50% glycerol is recommended if storing aliquots in -20°C for long term use (up to 1 year) Short term (less than 1 week): 4°C. Avoid freeze-thaw cycles.

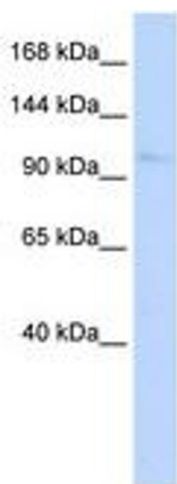


Image 1.