



[Go to Product page](#)

Datasheet for ABIN6743461  
**anti-PVRL2 antibody (C-Term)**

1 Image

### Overview

Quantity:	100 µL
Target:	PVRL2
Binding Specificity:	C-Term
Reactivity:	Human, Rat, Pig, Monkey
Host:	Rabbit
Clonality:	Polyclonal
Conjugate:	This PVRL2 antibody is un-conjugated
Application:	Western Blotting (WB)

### Product Details

Immunogen:	Synthetic peptide from C-Terminus of human PVRL2 (Q0MSE5, NP_002847). Percent identity by BLAST analysis: Human, Chimpanzee, Monkey, Marmoset, Rat, Elephant, Pig (100%), Mouse (92%).  Type of Immunogen: Synthetic peptide
Specificity:	Human PVRL2 / Nectin 2
Predicted Reactivity:	Percent identity by BLAST analysis: Human (100%) Mouse, Rat (92%).
Purification:	Immunoaffinity purified

### Target Details

Target:	PVRL2
---------	-------

## Target Details

---

Alternative Name:	PVRL2 / CD112 ( <a href="#">PVRL2 Products</a> )
Background:	Name/Gene ID: PVRL2  Synonyms: PVRL2, HVEB, Herpesvirus entry protein B, Poliovirus receptor-like 2, Nectin-2, PRR2, PVRR2, CD112, CD112 antigen, Herpes virus entry mediator B, Herpesvirus entry mediator B
Gene ID:	5819
NCBI Accession:	<a href="#">NP_002847</a>
UniProt:	<a href="#">Q92692</a>
Pathways:	<a href="#">Regulation of Leukocyte Mediated Immunity</a> , <a href="#">Positive Regulation of Immune Effector Process</a> , <a href="#">Cell-Cell Junction Organization</a>

## Application Details

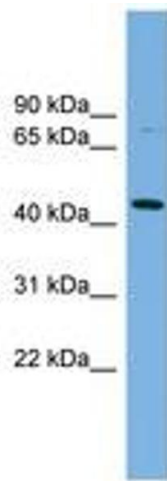
---

Application Notes:	Approved: WB (0.2 - 1 µg/mL)  Usage: Western Blot: Suggested dilution at 1 µg/mL in 5 % skim milk / PBS buffer, and HRP conjugated anti-Rabbit IgG should be diluted in 1: 50,000 - 100,000 as secondary antibody.
Comment:	Target Species of Antibody: Human
Restrictions:	For Research Use only

## Handling

---

Format:	Lyophilized
Reconstitution:	Distilled water
Concentration:	Lot specific
Buffer:	Lyophilized from PBS with 2 % sucrose
Handling Advice:	Avoid repeat freeze-thaw cycles.
Storage:	4 °C,-20 °C
Storage Comment:	Long term: -20°C, the use of 50% glycerol is recommended if storing aliquots in -20°C for long term use (up to 1 year)  Short term (less than 1 week): 4°C. Avoid freeze-thaw cycles.



**Image 1.**