



[Go to Product page](#)

Datasheet for ABIN6743468

anti-Calponin antibody (N-Term)

1 Image

Overview

Quantity:	100 µL
Target:	Calponin
Binding Specificity:	N-Term
Reactivity:	Human, Rat, Mouse, Dog, Monkey, Sheep, Cow, Horse
Host:	Rabbit
Clonality:	Polyclonal
Conjugate:	This Calponin antibody is un-conjugated
Application:	Western Blotting (WB)

Product Details

Immunogen:	Synthetic peptide from N-Terminus of human CNN1 (P51911, NP_001290). Percent identity by BLAST analysis: Human, Chimpanzee, Gorilla, Gibbon, Monkey, Marmoset, Mouse, Rat, Ferret, Sheep, Elephant, Panda, Dog, Bovine, Horse (100%), Galago, Pig (92%), Opossum, Platypus (85%), Lizard (83%). Type of Immunogen: Synthetic peptide
Specificity:	Human CNN1 / Calponin
Predicted Reactivity:	Percent identity by BLAST analysis: Human, Mouse, Rat, Sheep, Dog, Bovine, Horse (100%) Pig (92%).
Purification:	Immunoaffinity purified

Target Details

Target:	Calponin
Alternative Name:	CNN1 / Calponin (Calponin Products)
Background:	Name/Gene ID: CNN1 Synonyms: CNN1, Basic calponin, Calponin, Calponin-1, Calponins, basic, Calponin H1, smooth muscle, SMCC, Sm-Calp
Gene ID:	1264
NCBI Accession:	NP_001290
UniProt:	P51911

Application Details

Application Notes:	Approved: WB (0.2 - 1 µg/mL) Usage: Western Blot: Suggested dilution at 1 µg/mL in 5 % skim milk / PBS buffer, and HRP conjugated anti-Rabbit IgG should be diluted in 1: 50,000 - 100,000 as secondary antibody. Not recommended for: IHC-P
Comment:	Target Species of Antibody: Human
Restrictions:	For Research Use only

Handling

Format:	Lyophilized
Reconstitution:	Distilled water
Concentration:	Lot specific
Buffer:	Lyophilized from PBS with 2 % sucrose
Handling Advice:	Avoid repeat freeze-thaw cycles.
Storage:	4 °C, -20 °C
Storage Comment:	Long term: -20°C, the use of 50% glycerol is recommended if storing aliquots in -20°C for long term use (up to 1 year) Short term (less than 1 week): 4°C. Avoid freeze-thaw cycles.

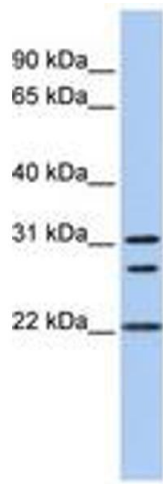


Image 1.