



[Go to Product page](#)

Datasheet for ABIN6743490  
**anti-NAT9 antibody (N-Term)**

1 Image

Overview

Quantity:	100 µL
Target:	NAT9
Binding Specificity:	N-Term
Reactivity:	Human, Guinea Pig, Monkey, Pig
Host:	Rabbit
Clonality:	Polyclonal
Conjugate:	This NAT9 antibody is un-conjugated
Application:	Western Blotting (WB)

Product Details

Immunogen:	Synthetic peptide from N-Terminus of human NAT9 (Q9BTE0, NP_056469). Percent identity by BLAST analysis: Human, Chimpanzee, Gorilla, Gibbon, Monkey, Marmoset, Platypus (100%), Galago, Mouse, Rat, Elephant, Panda, Dog, Bovine, Rabbit, Horse, Lizard (92%), Bat, Pig, Opossum, Guinea pig (85%).  Type of Immunogen: Synthetic peptide
Specificity:	Human NAT9
Predicted Reactivity:	Percent identity by BLAST analysis: Human (100%) Mouse, Rat, Dog, Bovine, Rabbit (92%) Pig, Guinea pig (85%).
Purification:	Immunoaffinity purified

## Target Details

---

Target:	NAT9
Alternative Name:	EBS / NAT9 ( <a href="#">NAT9 Products</a> )
Background:	Name/Gene ID: NAT9  Synonyms: NAT9, DKFZP564C103, EBS, EBSP, hNATL, Embryo brain-specific protein, Embryo brain specific protein, N-acetyltransferase 9
Gene ID:	26151
NCBI Accession:	<a href="#">NP_056469</a>
UniProt:	<a href="#">Q9BTE0</a>

## Application Details

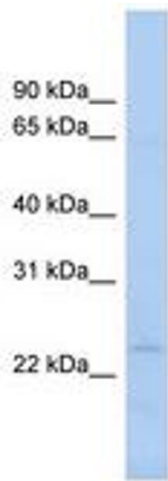
---

Application Notes:	Approved: WB (0.2 - 1 µg/mL)  Usage: Western Blot: Suggested dilution at 1 µg/mL in 5 % skim milk / PBS buffer, and HRP conjugated anti-Rabbit IgG should be diluted in 1: 50,000 - 100,000 as secondary antibody.
Comment:	Target Species of Antibody: Human
Restrictions:	For Research Use only

## Handling

---

Format:	Lyophilized
Reconstitution:	Distilled water
Concentration:	Lot specific
Buffer:	Lyophilized from PBS with 2 % sucrose
Handling Advice:	Avoid repeat freeze-thaw cycles.
Storage:	4 °C, -20 °C
Storage Comment:	Long term: -20°C, the use of 50% glycerol is recommended if storing aliquots in -20°C for long term use (up to 1 year)  Short term (less than 1 week): 4°C. Avoid freeze-thaw cycles.



**Image 1.**