



[Go to Product page](#)

Datasheet for ABIN6743493

anti-OGFOD1 antibody (AA 467-516)

1 Image

Overview

Quantity:	100 µL
Target:	OGFOD1
Binding Specificity:	AA 467-516
Reactivity:	Human, Mouse, Rat, Cow, Dog, Guinea Pig, Horse, Rabbit, Zebrafish (Danio rerio), Bat, Chicken, Monkey
Host:	Rabbit
Clonality:	Polyclonal
Conjugate:	This OGFOD1 antibody is un-conjugated
Application:	Western Blotting (WB)

Product Details

Immunogen:	Synthetic peptide located between aa467-516 of human OGFOD1 (Q8N543, NP_060703). Percent identity by BLAST analysis: Human, Chimpanzee, Gorilla, Orangutan, Gibbon, Monkey, Galago, Marmoset, Mouse, Rat, Elephant, Panda, Dog, Bovine, Bat, Rabbit, Horse, Guinea pig, Turkey, Chicken, Platypus (100%), Opossum, Xenopus (92%), Zebrafish (85%). Type of Immunogen: Synthetic peptide
Specificity:	Human OGFOD1
Predicted Reactivity:	Percent identity by BLAST analysis: Human, Mouse, Rat, Dog, Rabbit, Horse, Guinea pig, Chicken (100%) Zebrafish (85%).
Purification:	Immunoaffinity purified

Target Details

Target:	OGFOD1
Alternative Name:	OGFOD1 (OGFOD1 Products)
Background:	Name/Gene ID: OGFOD1 Synonyms: OGFOD1, KIAA1612, TPA1
Gene ID:	55239
NCBI Accession:	NP_060703
UniProt:	Q8N543

Application Details

Application Notes:	Approved: WB (0.2 - 1 µg/mL) Usage: Western Blot: Suggested dilution at 1 µg/mL in 5 % skim milk / PBS buffer, and HRP conjugated anti-Rabbit IgG should be diluted in 1: 50,000 - 100,000 as secondary antibody.
Comment:	Target Species of Antibody: Human
Restrictions:	For Research Use only

Handling

Format:	Lyophilized
Reconstitution:	Distilled water
Concentration:	Lot specific
Buffer:	Lyophilized from PBS with 2 % sucrose
Handling Advice:	Avoid repeat freeze-thaw cycles.
Storage:	4 °C, -20 °C
Storage Comment:	Long term: -20°C, the use of 50% glycerol is recommended if storing aliquots in -20°C for long term use (up to 1 year) Short term (less than 1 week): 4°C. Avoid freeze-thaw cycles.

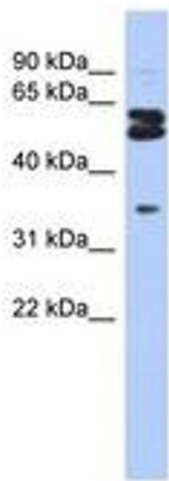


Image 1.