



[Go to Product page](#)

Datasheet for ABIN6743495
anti-UGCGL2 antibody (AA 144-193)

1 Image

Overview

Quantity:	100 µL
Target:	UGCGL2 (UGT2)
Binding Specificity:	AA 144-193
Reactivity:	Human, Rabbit, Monkey
Host:	Rabbit
Clonality:	Polyclonal
Conjugate:	This UGCGL2 antibody is un-conjugated
Application:	Western Blotting (WB)

Product Details

Immunogen:	Synthetic peptide located between aa144-193 of human UGGT2 (Q9NYU1, NP_064506). Percent identity by BLAST analysis: Human, Chimpanzee, Gorilla, Monkey, Marmoset, Elephant, Rabbit (100%), Gibbon, Galago, Dog, Bovine, Bat, Horse, Pig (92%), Zebra finch (85%). Type of Immunogen: Synthetic peptide
Specificity:	Human UGGT2 / UGCGL2
Predicted Reactivity:	Percent identity by BLAST analysis: Human (100%).
Purification:	Immunoaffinity purified

Target Details

Target:	UGCGL2 (UGT2)
---------	---------------

Target Details

Alternative Name:	UGGT2 (UGT2 Products)
Background:	Name/Gene ID: UGGT2 Synonyms: UGGT2, HUGT2, UGT2, UGCGL2
Gene ID:	55757
NCBI Accession:	NP_064506
UniProt:	Q9NYU1
Pathways:	SARS-CoV-2 Protein Interactome

Application Details

Application Notes:	Approved: WB (0.2 - 1 µg/mL) Usage: Western Blot: Suggested dilution at 1 µg/mL in 5 % skim milk / PBS buffer, and HRP conjugated anti-Rabbit IgG should be diluted in 1: 50,000 - 100,000 as secondary antibody.
Comment:	Target Species of Antibody: Human
Restrictions:	For Research Use only

Handling

Format:	Lyophilized
Reconstitution:	Distilled water
Concentration:	Lot specific
Buffer:	Lyophilized from PBS with 2 % sucrose
Handling Advice:	Avoid repeat freeze-thaw cycles.
Storage:	4 °C, -20 °C
Storage Comment:	Long term: -20°C, the use of 50% glycerol is recommended if storing aliquots in -20°C for long term use (up to 1 year) Short term (less than 1 week): 4°C. Avoid freeze-thaw cycles.

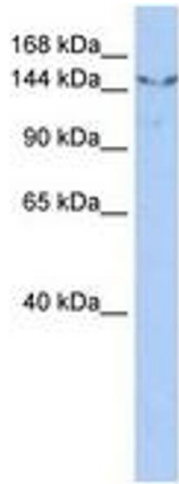


Image 1.