

Datasheet for ABIN6743506
anti-ART5 antibody (AA 215-264)[Go to Product page](#)

1 Image

Overview

Quantity:	100 µL
Target:	ART5
Binding Specificity:	AA 215-264
Reactivity:	Human, Mouse, Rat, Horse, Monkey
Host:	Rabbit
Clonality:	Polyclonal
Conjugate:	This ART5 antibody is un-conjugated
Application:	Western Blotting (WB)

Product Details

Immunogen:	Synthetic peptide located between aa215-264 of human ART5 (Q96L15, NP_443750). Percent identity by BLAST analysis: Human, Chimpanzee, Monkey, Marmoset, Horse (100%), Gorilla, Gibbon, Elephant, Dog, Bat, Rabbit (92%), Galago, Mouse, Rat (85%). Type of Immunogen: Synthetic peptide
Specificity:	Human ART5
Predicted Reactivity:	Percent identity by BLAST analysis: Horse (100%) Dog, Rabbit (92%) Mouse, Rat (85%).
Purification:	Immunoaffinity purified

Target Details

Target:	ART5
---------	------

Target Details

Alternative Name:	ART5 (ART5 Products)
Background:	Name/Gene ID: ART5 Synonyms: ART5, ADP-ribosyltransferase 5, ARTC5, Ecto-ADP-ribosyltransferase 5, Mono(ADP-ribosyl)transferase 5
Gene ID:	116969
NCBI Accession:	NP_443750
UniProt:	Q96L15

Application Details

Application Notes:	Approved: WB (0.2 - 1 µg/mL) Usage: Western Blot: Suggested dilution at 1 µg/mL in 5 % skim milk / PBS buffer, and HRP conjugated anti-Rabbit IgG should be diluted in 1: 50,000 - 100,000 as secondary antibody.
Comment:	Target Species of Antibody: Human
Restrictions:	For Research Use only

Handling

Format:	Lyophilized
Reconstitution:	Distilled water
Concentration:	Lot specific
Buffer:	Lyophilized from PBS with 2 % sucrose
Handling Advice:	Avoid repeat freeze-thaw cycles.
Storage:	4 °C, -20 °C
Storage Comment:	Long term: -20°C, the use of 50% glycerol is recommended if storing aliquots in -20°C for long term use (up to 1 year) Short term (less than 1 week): 4°C. Avoid freeze-thaw cycles.

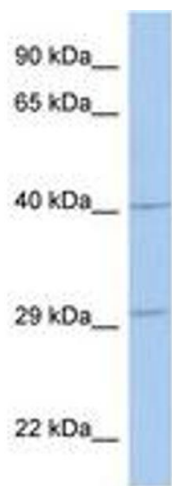


Image 1.