



[Go to Product page](#)

Datasheet for ABIN6743509  
**anti-PWWP2B antibody (AA 35-84)**

1 Image

Overview

Quantity:	100 µL
Target:	PWWP2B
Binding Specificity:	AA 35-84
Reactivity:	Human, Cow, Bat
Host:	Rabbit
Clonality:	Polyclonal
Conjugate:	This PWWP2B antibody is un-conjugated
Application:	Western Blotting (WB)

Product Details

Immunogen:	Synthetic peptide located between aa35-84 of human PWWP2B (Q6NUJ5, NP_001092107). Percent identity by BLAST analysis: Human, Gorilla, Bovine, Bat (100%), Mouse, Rat (91%).  Type of Immunogen: Synthetic peptide
Specificity:	Human PWWP2B
Predicted Reactivity:	Percent identity by BLAST analysis: Bovine (100%) Mouse, Rat (91%).
Purification:	Immunoaffinity purified

Target Details

Target:	PWWP2B
Alternative Name:	PWWP2B ( <a href="#">PWWP2B Products</a> )

## Target Details

---

Background: Name/Gene ID: PWWP2B  
Synonyms: PWWP2B, BA432J24.1, RP11-273H7.1, Pp8607, PWWP domain containing 2, PWWP domain containing 2B, PWWP2

---

Gene ID: 170394

---

NCBI Accession: [NP\\_001092107](#)

---

UniProt: [Q6NUJ5](#)

---

## Application Details

---

Application Notes: Approved: WB (0.2 - 1 µg/mL)  
Usage: Western Blot: Suggested dilution at 1 µg/mL in 5 % skim milk / PBS buffer, and HRP conjugated anti-Rabbit IgG should be diluted in 1: 50,000 - 100,000 as secondary antibody.

---

Comment: Target Species of Antibody: Human

---

Restrictions: For Research Use only

---

## Handling

---

Format: Lyophilized

---

Reconstitution: Distilled water

---

Concentration: Lot specific

---

Buffer: Lyophilized from PBS with 2 % sucrose

---

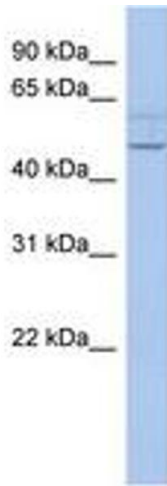
Handling Advice: Avoid repeat freeze-thaw cycles.

---

Storage: 4 °C, -20 °C

---

Storage Comment: Long term: -20°C, the use of 50% glycerol is recommended if storing aliquots in -20°C for long term use (up to 1 year)  
Short term (less than 1 week): 4°C. Avoid freeze-thaw cycles.



**Image 1.**