

Datasheet for ABIN6743510
anti-MAP2K7 antibody (AA 287-336)



[Go to Product page](#)

1 Image

Overview

Quantity:	100 µL
Target:	MAP2K7
Binding Specificity:	AA 287-336
Reactivity:	Human, Mouse, Rat, Sheep, Guinea Pig, Pig, Rabbit, Cow, Horse, Xenopus laevis, Bat, Monkey
Host:	Rabbit
Clonality:	Polyclonal
Conjugate:	This MAP2K7 antibody is un-conjugated
Application:	Western Blotting (WB)

Product Details

Immunogen:	Synthetic peptide located between aa287-336 of human MAP2K7 (O14733, NP_660186). Percent identity by BLAST analysis: Human, Chimpanzee, Gorilla, Gibbon, Monkey, Galago, Marmoset, Mouse, Rat, Sheep, Elephant, Bovine, Bat, Rabbit, Horse, Pig, Opossum, Guinea pig, Xenopus, Stickleback (100%), Lizard, Zebrafish (92%), Beetle (83%). Type of Immunogen: Synthetic peptide
Specificity:	Human MAP2K7 / MEK7
Predicted Reactivity:	Percent identity by BLAST analysis: Human, Rat, Sheep, Bovine, Rabbit, Pig, Guinea pig, Xenopus (100%) Zebrafish (92%).
Purification:	Immunoaffinity purified

Target Details

Target:	MAP2K7
Alternative Name:	MAP2K7 / MEK7 (MAP2K7 Products)
Background:	Name/Gene ID: MAP2K7 Subfamily: MAP2K Family: Protein Kinase Synonyms: MAP2K7, JNK kinase 2, MAP kinase kinase 7, MEK 7, Jnk2, PRKMK7, SAPKK-4, SKK4, MAPK/ERK kinase 7, MAPKK 7, MAPKK7, SAPK kinase 4, JNK-activating kinase 2, JNKK 2, Map kinase kinase 7 beta 1, Map kinase kinase 7 gamma 2, MEK7, MKK7, SAPKK4
Gene ID:	5609
NCBI Accession:	NP_660186
UniProt:	O14733
Pathways:	MAPK Signaling , TLR Signaling , Fc-epsilon Receptor Signaling Pathway , Activation of Innate immune Response , Toll-Like Receptors Cascades , BCR Signaling

Application Details

Application Notes:	Approved: WB (0.2 - 1 µg/mL) Usage: Western Blot: Suggested dilution at 1 µg/mL in 5 % skim milk / PBS buffer, and HRP conjugated anti-Rabbit IgG should be diluted in 1: 50,000 - 100,000 as secondary antibody.
Comment:	Target Species of Antibody: Human
Restrictions:	For Research Use only

Handling

Format:	Lyophilized
Reconstitution:	Distilled water
Concentration:	Lot specific
Buffer:	Lyophilized from PBS with 2 % sucrose
Handling Advice:	Avoid repeat freeze-thaw cycles.
Storage:	4 °C, -20 °C

Handling

Storage Comment: Long term: -20°C, the use of 50% glycerol is recommended if storing aliquots in -20°C for long term use (up to 1 year)
Short term (less than 1 week): 4°C. Avoid freeze-thaw cycles.

Images

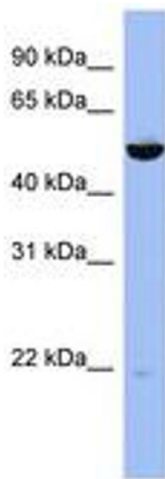


Image 1.