



[Go to Product page](#)

Datasheet for ABIN6743517
anti-CHSY3 antibody (AA 107-156)

1 Image

Overview

Quantity:	100 µL
Target:	CHSY3
Binding Specificity:	AA 107-156
Reactivity:	Human, Cow, Monkey, Bat
Host:	Rabbit
Clonality:	Polyclonal
Conjugate:	This CHSY3 antibody is un-conjugated
Application:	Western Blotting (WB)

Product Details

Immunogen:	Synthetic peptide located between aa107-156 of human CHSY3 (Q70JA7, NP_787052). Percent identity by BLAST analysis: Human, Chimpanzee, Gibbon, Monkey, Galago, Marmoset, Panda, Bovine, Bat (100%), Gorilla (92%), Pig (85%). Type of Immunogen: Synthetic peptide
Specificity:	Human CHSY3
Predicted Reactivity:	Percent identity by BLAST analysis: Human (100%).
Purification:	Immunoaffinity purified

Target Details

Target:	CHSY3
---------	-------

Target Details

Alternative Name:	CHSY3 / CSS3 (CHSY3 Products)
Background:	Name/Gene ID: CHSY3 Synonyms: CHSY3, Chondroitin synthase-2, Carbohydrate synthase 2, Chondroitin sulfate synthase 3, Chondroitin synthase 2, CHSY-2, CHSY2, CSS3
Gene ID:	337876
NCBI Accession:	NP_787052
UniProt:	Q70JA7
Pathways:	Glycosaminoglycan Metabolic Process

Application Details

Application Notes:	Approved: WB (0.2 - 1 µg/mL) Usage: Western Blot: Suggested dilution at 1 µg/mL in 5 % skim milk / PBS buffer, and HRP conjugated anti-Rabbit IgG should be diluted in 1: 50,000 - 100,000 as secondary antibody.
Comment:	Target Species of Antibody: Human
Restrictions:	For Research Use only

Handling

Format:	Lyophilized
Reconstitution:	Distilled water
Concentration:	Lot specific
Buffer:	Lyophilized from PBS with 2 % sucrose
Handling Advice:	Avoid repeat freeze-thaw cycles.
Storage:	4 °C, -20 °C
Storage Comment:	Long term: -20°C, the use of 50% glycerol is recommended if storing aliquots in -20°C for long term use (up to 1 year) Short term (less than 1 week): 4°C. Avoid freeze-thaw cycles.

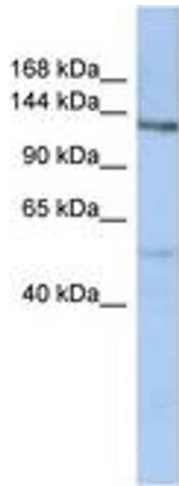


Image 1.