

Datasheet for ABIN6743524  
**anti-SMCR7L antibody (AA 35-84)**[Go to Product page](#)

## 1 Image

## Overview

Quantity:	100 µL
Target:	SMCR7L
Binding Specificity:	AA 35-84
Reactivity:	Human, Mouse, Rat, Cow, Dog, Guinea Pig, Horse, Rabbit, Hamster, Monkey, Pig, Xenopus laevis
Host:	Rabbit
Clonality:	Polyclonal
Conjugate:	This SMCR7L antibody is un-conjugated
Application:	Western Blotting (WB)

## Product Details

Immunogen:	Synthetic peptide located between aa35-84 of human SMCR7L (Q9NQG6, NP_061881). Percent identity by BLAST analysis: Human, Chimpanzee, Gorilla, Orangutan, Monkey, Galago, Mouse, Rat, Hamster, Dog, Bovine, Rabbit, Horse, Pig, Guinea pig, Xenopus (100%), Elephant, Bat, Opossum (92%), Zebra finch, Lizard (85%).  Type of Immunogen: Synthetic peptide
Specificity:	Human SMCR7L
Predicted Reactivity:	Percent identity by BLAST analysis: Human, Mouse, Dog, Bovine (100%).
Purification:	Immunoaffinity purified

## Target Details

Target:	SMCR7L
Alternative Name:	MIEF1 / SMCR7L ( <a href="#">SMCR7L Products</a> )
Background:	Name/Gene ID: MIEF1  Synonyms: MIEF1, DJ1104E15.3, HSU79252, SMCR7L, MID51
Gene ID:	54471
NCBI Accession:	<a href="#">NP_061881</a>
UniProt:	<a href="#">Q9NQG6</a>

## Application Details

Application Notes:	Approved: WB (0.2 - 1 µg/mL)  Usage: Western Blot: Suggested dilution at 1 µg/mL in 5 % skim milk / PBS buffer, and HRP conjugated anti-Rabbit IgG should be diluted in 1: 50,000 - 100,000 as secondary antibody.
Comment:	Target Species of Antibody: Human
Restrictions:	For Research Use only

## Handling

Format:	Lyophilized
Reconstitution:	Distilled water
Concentration:	Lot specific
Buffer:	Lyophilized from PBS with 2 % sucrose
Handling Advice:	Avoid repeat freeze-thaw cycles.
Storage:	4 °C, -20 °C
Storage Comment:	Long term: -20°C, the use of 50% glycerol is recommended if storing aliquots in -20°C for long term use (up to 1 year)  Short term (less than 1 week): 4°C. Avoid freeze-thaw cycles.

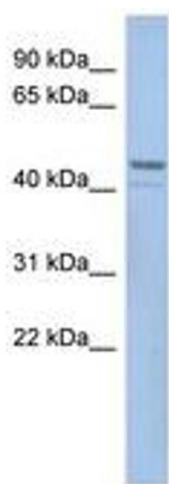


Image 1.