



[Go to Product page](#)

Datasheet for ABIN6743525

## anti-CEACAM19 antibody (AA 107-156)

### 1 Image

#### Overview

Quantity:	100 µL
Target:	CEACAM19
Binding Specificity:	AA 107-156
Reactivity:	Human
Host:	Rabbit
Clonality:	Polyclonal
Conjugate:	This CEACAM19 antibody is un-conjugated
Application:	Western Blotting (WB)

#### Product Details

Immunogen: Synthetic peptide located between aa107-156 of human CEACAM19 (Q7Z692, NP\_064604).  
Percent identity by BLAST analysis: Human, Chimpanzee, Gorilla (100%), Gibbon, Marmoset (92%).

Type of Immunogen: Synthetic peptide

Specificity:	Human CEACAM19
Predicted Reactivity:	Percent identity by BLAST analysis: Human (100%).
Purification:	Immunoaffinity purified

#### Target Details

Target: CEACAM19

## Target Details

---

Alternative Name: CEACAM19 ([CEACAM19 Products](#))

Background: Name/Gene ID: CEACAM19

Synonyms: CEACAM19, CEAL1

Gene ID: 56971

NCBI Accession: [NP\\_064604](#)

UniProt: [Q7Z692](#)

## Application Details

---

Application Notes: Approved: WB (0.2 - 1 µg/mL)

Usage: Western Blot: Suggested dilution at 1 µg/mL in 5 % skim milk / PBS buffer, and HRP conjugated anti-Rabbit IgG should be diluted in 1: 50,000 - 100,000 as secondary antibody.

Comment: Target Species of Antibody: Human

Restrictions: For Research Use only

## Handling

---

Format: Lyophilized

Reconstitution: Distilled water

Concentration: Lot specific

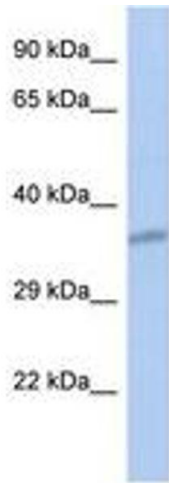
Buffer: Lyophilized from PBS with 2 % sucrose

Handling Advice: Avoid repeat freeze-thaw cycles.

Storage: 4 °C, -20 °C

Storage Comment: Long term: -20°C, the use of 50% glycerol is recommended if storing aliquots in -20°C for long term use (up to 1 year)

Short term (less than 1 week): 4°C. Avoid freeze-thaw cycles.



**Image 1.**