



Datasheet for ABIN6743530  
**anti-DDRGK1 antibody (AA 143-192)**



[Go to Product page](#)

1 Image

Overview

Quantity:	100 µL
Target:	DDRGK1
Binding Specificity:	AA 143-192
Reactivity:	Human, Cow, Dog, Horse, Rabbit, Pig, Bat, Monkey
Host:	Rabbit
Clonality:	Polyclonal
Conjugate:	This DDRGK1 antibody is un-conjugated
Application:	Western Blotting (WB)

Product Details

Immunogen:	Synthetic peptide located between aa143-192 of human DDRGK1 (Q96HY6, NP_076424). Percent identity by BLAST analysis: Human, Chimpanzee, Gorilla, Gibbon, Monkey, Galago, Marmoset, Panda, Dog, Bovine, Bat, Rabbit, Horse, Pig (100%), Mouse, Rat, Opossum, Guinea pig (92%).  Type of Immunogen: Synthetic peptide
Specificity:	Human DDRGK1 / C20orf116
Predicted Reactivity:	Percent identity by BLAST analysis:
Purification:	Immunoaffinity purified

## Target Details

---

Target:	DDR GK1
Alternative Name:	DDR GK1 ( <a href="#">DDR GK1 Products</a> )
Background:	Name/Gene ID: DDR GK1  Synonyms: DDR GK1, C20orf116, DJ1187M17.3, Dashurin, DDR GK domain containing 1, UFBP1
Gene ID:	65992
NCBI Accession:	<a href="#">NP_076424</a>
UniProt:	<a href="#">Q96HY6</a>

## Application Details

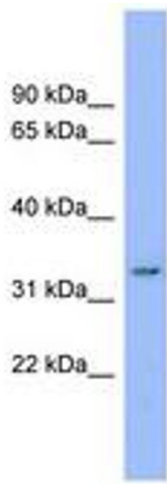
---

Application Notes:	Approved: WB (0.2 - 1 µg/mL)  Usage: Western Blot: Suggested dilution at 1 µg/mL in 5 % skim milk / PBS buffer, and HRP conjugated anti-Rabbit IgG should be diluted in 1: 50,000 - 100,000 as secondary antibody.
Comment:	Target Species of Antibody: Human
Restrictions:	For Research Use only

## Handling

---

Format:	Lyophilized
Reconstitution:	Distilled water
Concentration:	Lot specific
Buffer:	Lyophilized from PBS with 2 % sucrose
Handling Advice:	Avoid repeat freeze-thaw cycles.
Storage:	4 °C, -20 °C
Storage Comment:	Long term: -20°C, the use of 50% glycerol is recommended if storing aliquots in -20°C for long term use (up to 1 year)  Short term (less than 1 week): 4°C. Avoid freeze-thaw cycles.



**Image 1.**