



[Go to Product page](#)

Datasheet for ABIN6743533
anti-PAQR6 antibody (AA 107-156)

1 Image

Overview

Quantity:	100 µL
Target:	PAQR6
Binding Specificity:	AA 107-156
Reactivity:	Human, Mouse, Rat, Cow, Guinea Pig, Horse, Rabbit, Zebrafish (Danio rerio), Dog, Goat, Bat, Monkey, Pig, Xenopus laevis
Host:	Rabbit
Clonality:	Polyclonal
Conjugate:	This PAQR6 antibody is un-conjugated
Application:	Western Blotting (WB)

Product Details

Immunogen:	Synthetic peptide located between aa107-156 of human PAQR6 (Q5TCK9, NP_079173). Percent identity by BLAST analysis: Human, Gorilla, Gibbon, Monkey, Galago, Marmoset, Mouse, Rat, Goat, Elephant, Panda, Dog, Bovine, Bat, Rabbit, Horse, Pig, Opossum, Guinea pig, Platypus, Xenopus, Catfish, Stickleback, Zebrafish (100%), Orangutan, Turkey, Chicken (92%), Hamster (83%). Type of Immunogen: Synthetic peptide
Specificity:	Human PAQR6
Predicted Reactivity:	Percent identity by BLAST analysis: Human, Mouse, Rat, Dog, Bovine, Rabbit, Horse, Pig, Xenopus, Zebrafish (100%).

Product Details

Purification: Immunoaffinity purified

Target Details

Target: PAQR6

Alternative Name: PAQR6 ([PAQR6 Products](#))

Background: Name/Gene ID: PAQR6

Synonyms: PAQR6

Gene ID: 79957

NCBI Accession: [NP_079173](#)

UniProt: [Q6TCH4](#)

Application Details

Application Notes: Approved: WB (0.2 - 1 µg/mL)

Usage: Western Blot: Suggested dilution at 1 µg/mL in 5 % skim milk / PBS buffer, and HRP conjugated anti-Rabbit IgG should be diluted in 1: 50,000 - 100,000 as secondary antibody.

Comment: Target Species of Antibody: Human

Restrictions: For Research Use only

Handling

Format: Lyophilized

Reconstitution: Distilled water

Concentration: Lot specific

Buffer: Lyophilized from PBS with 2 % sucrose

Handling Advice: Avoid repeat freeze-thaw cycles.

Storage: 4 °C, -20 °C

Storage Comment: Long term: -20°C, the use of 50% glycerol is recommended if storing aliquots in -20°C for long term use (up to 1 year)

Short term (less than 1 week): 4°C. Avoid freeze-thaw cycles.

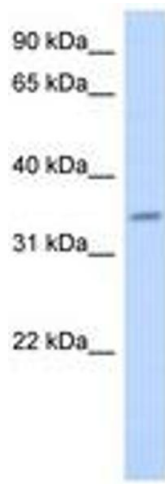


Image 1.