

## Datasheet for ABIN6743549 anti-ANKH antibody (AA 107-156)



[Go to Product page](#)

### 1 Image

#### Overview

Quantity:	100 µL
Target:	ANKH
Binding Specificity:	AA 107-156
Reactivity:	Human, Mouse, Rat, Guinea Pig, Rabbit, Dog, Monkey, Bat, Chicken
Host:	Rabbit
Clonality:	Polyclonal
Conjugate:	This ANKH antibody is un-conjugated
Application:	Western Blotting (WB)

#### Product Details

Immunogen:	Synthetic peptide located between aa107-156 of human ANKH (Q9HCJ1, NP_473368). Percent identity by BLAST analysis: Human, Chimpanzee, Gorilla, Gibbon, Monkey, Marmoset, Mouse, Rat, Elephant, Panda, Dog, Bat, Rabbit, Guinea pig, Turkey, Zebra finch, Chicken, Platypus (100%), Galago, Bovine, Horse, Pig, Opossum, Seabass, Zebrafish (92%), Lizard, Xenopus, Salmon, Pufferfish (85%).  Type of Immunogen: Synthetic peptide
Specificity:	Human ANKH
Predicted Reactivity:	Percent identity by BLAST analysis: Human, Mouse, Rat, Dog, Rabbit, Chicken (100%) Bovine, Horse, Pig, Zebrafish (92%) Xenopus (85%).
Purification:	Immunoaffinity purified

## Target Details

Target:	ANKH
Alternative Name:	ANKH / ANK ( <a href="#">ANKH Products</a> )
Background:	Name/Gene ID: ANKH  Synonyms: ANKH, CMDJ, CPPDD, HANK, KIAA1581, ANK, MANK, CCAL2
Gene ID:	56172
NCBI Accession:	<a href="#">NP_473368</a>
UniProt:	<a href="#">Q9HCJ1</a>

## Application Details

Application Notes:	Approved: WB (0.2 - 1 µg/mL)  Usage: Western Blot: Suggested dilution at 1 µg/mL in 5 % skim milk / PBS buffer, and HRP conjugated anti-Rabbit IgG should be diluted in 1: 50,000 - 100,000 as secondary antibody.
Comment:	Target Species of Antibody: Human
Restrictions:	For Research Use only

## Handling

Format:	Lyophilized
Reconstitution:	Distilled water
Concentration:	Lot specific
Buffer:	Lyophilized from PBS with 2 % sucrose
Handling Advice:	Avoid repeat freeze-thaw cycles.
Storage:	4 °C, -20 °C
Storage Comment:	Long term: -20°C, the use of 50% glycerol is recommended if storing aliquots in -20°C for long term use (up to 1 year)  Short term (less than 1 week): 4°C. Avoid freeze-thaw cycles.

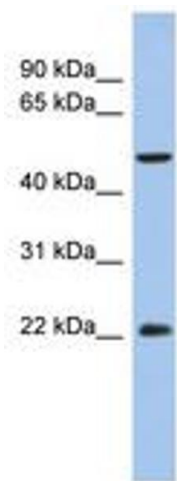


Image 1.