

Datasheet for ABIN6743587

anti-PAR1 antibody (AA 51-100)[Go to Product page](#)**1** Image

Overview

| | |
|----------------------|-------------------------------------|
| Quantity: | 100 µL |
| Target: | PAR1 (F2R) |
| Binding Specificity: | AA 51-100 |
| Reactivity: | Human, Monkey |
| Host: | Rabbit |
| Clonality: | Polyclonal |
| Conjugate: | This PAR1 antibody is un-conjugated |
| Application: | Western Blotting (WB) |

Product Details

| | |
|-----------------------|---|
| Immunogen: | Synthetic peptide located between aa51-100 of human F2R (P25116, NP_001983). Percent identity by BLAST analysis: Human, Gorilla, Gibbon, Baboon, Monkey (100%), Marmoset (88%). Type of Immunogen: Synthetic peptide |
| Specificity: | Human F2R / Thrombin Receptor |
| Predicted Reactivity: | Percent identity by BLAST analysis: Human, Baboon (100%). |
| Purification: | Immunoaffinity purified |

Target Details

| | |
|-------------------|---|
| Target: | PAR1 (F2R) |
| Alternative Name: | F2R / Thrombin Receptor / PAR1 (F2R Products) |

Target Details

| | |
|-----------------|---|
| Background: | Name/Gene ID: F2R |
| | Subfamily: Proteinase-activated |
| | Family: GPCR |
| | Synonyms: F2R, CF2R, Coagulation factor II receptor, PAR1, PAR-1, Thrombin receptor, TR, HTR, Protease-activated receptor 1 |
| Gene ID: | 2149 |
| NCBI Accession: | NP_001983 |
| UniProt: | P25116 |
| Pathways: | Nuclear Receptor Transcription Pathway , Skeletal Muscle Fiber Development , Positive Regulation of Endopeptidase Activity , Protein targeting to Nucleus |

Application Details

| | |
|--------------------|--|
| Application Notes: | Approved: WB (0.2 - 1 µg/mL) |
| | Usage: Western Blot: Suggested dilution at 1 µg/mL in 5 % skim milk / PBS buffer, and HRP conjugated anti-Rabbit IgG should be diluted in 1: 50,000 - 100,000 as secondary antibody. |
| Comment: | Target Species of Antibody: Human |
| Restrictions: | For Research Use only |

Handling

| | |
|------------------|--|
| Format: | Lyophilized |
| Reconstitution: | Distilled water |
| Concentration: | Lot specific |
| Buffer: | Lyophilized from PBS with 2 % sucrose |
| Handling Advice: | Avoid repeat freeze-thaw cycles. |
| Storage: | 4 °C,-20 °C |
| Storage Comment: | Long term: -20°C, the use of 50% glycerol is recommended if storing aliquots in -20°C for long term use (up to 1 year) |
| | Short term (less than 1 week): 4°C. Avoid freeze-thaw cycles. |

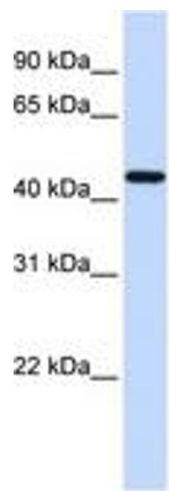


Image 1.