

Datasheet for ABIN6743594
anti-PPP1R27 antibody (AA 36-85)[Go to Product page](#)

1 Image

Overview

Quantity:	100 µL
Target:	PPP1R27
Binding Specificity:	AA 36-85
Reactivity:	Human, Rat, Cow, Dog, Mouse, Guinea Pig, Horse, Hamster, Chicken, Xenopus laevis
Host:	Rabbit
Clonality:	Polyclonal
Conjugate:	This PPP1R27 antibody is un-conjugated
Application:	Western Blotting (WB)

Product Details

Immunogen:	Synthetic peptide located between aa36-85 of human PPP1R27 (Q86WC6, NP_001007534). Percent identity by BLAST analysis: Human, Chimpanzee, Gorilla, Gibbon, Mouse, Rat, Hamster, Panda, Dog, Bovine, Horse, Guinea pig, Turkey, Chicken, Lizard, Xenopus (100%), Monkey, Elephant, Bat, Opossum (92%), Galago, Zebra finch (85%). Type of Immunogen: Synthetic peptide
Specificity:	Human DYSFIP1
Predicted Reactivity:	Percent identity by BLAST analysis: Human, Mouse, Rat, Dog, Bovine, Chicken (100%).
Purification:	Immunoaffinity purified

Target Details

Target:	PPP1R27
Alternative Name:	PPP1R27 / DYSFIP1 (PPP1R27 Products)
Background:	Name/Gene ID: PPP1R27 Synonyms: PPP1R27, DYSFIP1, Toonin
Gene ID:	116729
NCBI Accession:	NP_001007534
UniProt:	Q86WC6

Application Details

Application Notes:	Approved: WB (0.2 - 1 µg/mL) Usage: Western Blot: Suggested dilution at 1 µg/mL in 5 % skim milk / PBS buffer, and HRP conjugated anti-Rabbit IgG should be diluted in 1: 50,000 - 100,000 as secondary antibody.
Comment:	Target Species of Antibody: Human
Restrictions:	For Research Use only

Handling

Format:	Lyophilized
Reconstitution:	Distilled water
Concentration:	Lot specific
Buffer:	Lyophilized from PBS with 2 % sucrose
Handling Advice:	Avoid repeat freeze-thaw cycles.
Storage:	4 °C, -20 °C
Storage Comment:	Long term: -20°C, the use of 50% glycerol is recommended if storing aliquots in -20°C for long term use (up to 1 year) Short term (less than 1 week): 4°C. Avoid freeze-thaw cycles.

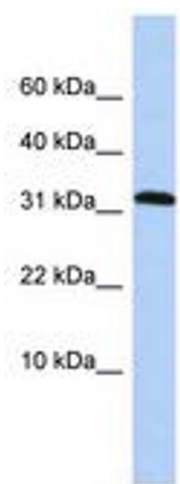


Image 1.