



Datasheet for ABIN6743604
anti-CPN1 antibody (AA 323-372)



[Go to Product page](#)

1 Image

Overview

Quantity:	100 µL
Target:	CPN1
Binding Specificity:	AA 323-372
Reactivity:	Human, Mouse, Rat, Horse, Rabbit, Cow, Dog, Guinea Pig, Pig, Monkey
Host:	Rabbit
Clonality:	Polyclonal
Conjugate:	This CPN1 antibody is un-conjugated
Application:	Western Blotting (WB)

Product Details

Immunogen:	Synthetic peptide located between aa323-372 of human CPN1 (P15169, NP_001299). Percent identity by BLAST analysis: Human, Gorilla, Gibbon, Monkey, Marmoset, Mouse, Rat, Dog, Bovine, Rabbit, Horse, Pig, Guinea pig (100%), Galago, Elephant, Bat (92%), Salmon (85%). Type of Immunogen: Synthetic peptide
Specificity:	Human CPN1
Predicted Reactivity:	Percent identity by BLAST analysis: Human, Dog, Rabbit, Horse, Pig, Guinea pig (100%).
Purification:	Immunoaffinity purified

Target Details

Target:	CPN1
---------	------

Target Details

Alternative Name:	CPN1 / ACBP (CPN1 Products)
Background:	Name/Gene ID: CPN1 Subfamily: Metallopeptidase M14 Family: Exopeptidase Synonyms: CPN1, ACBP, Arginine carboxypeptidase, Anaphylatoxin inactivator, Carboxypeptidase K, Kininase-1, Lysine carboxypeptidase, Kininase I, Serum carboxypeptidase N, SCPN, Plasma carboxypeptidase B, CPN
Gene ID:	1369
NCBI Accession:	NP_001299
UniProt:	P15169
Pathways:	Metabolism of Steroid Hormones and Vitamin D , Steroid Hormone Biosynthesis , Peptide Hormone Metabolism , Regulation of Systemic Arterial Blood Pressure by Hormones , C21-Steroid Hormone Metabolic Process

Application Details

Application Notes:	Approved: WB (0.2 - 1 µg/mL) Usage: Western Blot: Suggested dilution at 1 µg/mL in 5 % skim milk / PBS buffer, and HRP conjugated anti-Rabbit IgG should be diluted in 1: 50,000 - 100,000 as secondary antibody.
Comment:	Target Species of Antibody: Human
Restrictions:	For Research Use only

Handling

Format:	Lyophilized
Reconstitution:	Distilled water
Concentration:	Lot specific
Buffer:	Lyophilized from PBS with 2 % sucrose
Handling Advice:	Avoid repeat freeze-thaw cycles.
Storage:	4 °C, -20 °C

Handling

Storage Comment: Long term: -20°C, the use of 50% glycerol is recommended if storing aliquots in -20°C for long term use (up to 1 year)
Short term (less than 1 week): 4°C. Avoid freeze-thaw cycles.

Images

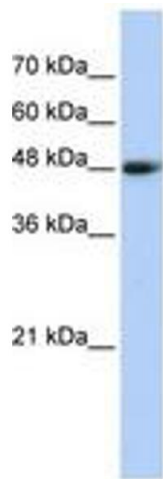


Image 1.