

Datasheet for ABIN6743605  
**anti-DPYSL2 antibody (AA 432-481)**



[Go to Product page](#)

1 Image

## Overview

Quantity:	100 µL
Target:	DPYSL2
Binding Specificity:	AA 432-481
Reactivity:	Human, Mouse, Rat, Cow, Pig, Dog, Guinea Pig, Horse, Rabbit, Zebrafish (Danio rerio), Bat, Hamster
Host:	Rabbit
Clonality:	Polyclonal
Conjugate:	This DPYSL2 antibody is un-conjugated
Application:	Western Blotting (WB)

## Product Details

Immunogen:	Synthetic peptide located between aa432-481 of human DPYSL2 (Q16555, NP_001377). Percent identity by BLAST analysis: Human, Chimpanzee, Gorilla, Orangutan, Gibbon, Galago, Mouse, Rat, Hamster, Elephant, Dog, Bovine, Bat, Rabbit, Horse, Pig, Guinea pig (100%), Opossum, Turkey, Chicken (92%), Xenopus (85%).  Type of Immunogen: Synthetic peptide
Specificity:	Human DPYSL2 / CRMP2
Predicted Reactivity:	Percent identity by BLAST analysis: Human, Dog, Rabbit, Guinea pig (100%) Chicken (92%) Xenopus (85%).
Purification:	Immunoaffinity purified

## Target Details

---

Target:	DPYSL2
Alternative Name:	DPYSL2 / CRMP2 ( <a href="#">DPYSL2 Products</a> )
Background:	Name/Gene ID: DPYSL2  Synonyms: DPYSL2, CRMP2, CRMP-2, DHPRP2, Dihydropyrimidinase-like 2, DRP-2, N2A3, ULIP2, ULIP-2, Unc-33-like phosphoprotein 2
Gene ID:	1808
NCBI Accession:	<a href="#">NP_001377</a>
UniProt:	<a href="#">Q16555</a>
Pathways:	<a href="#">Regulation of Cell Size</a>

## Application Details

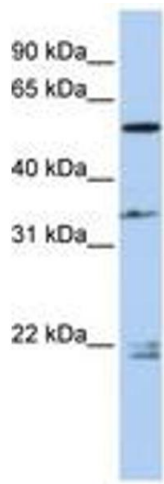
---

Application Notes:	Approved: WB (0.2 - 1 µg/mL)  Usage: Western Blot: Suggested dilution at 1 µg/mL in 5 % skim milk / PBS buffer, and HRP conjugated anti-Rabbit IgG should be diluted in 1: 50,000 - 100,000 as secondary antibody.
Comment:	Target Species of Antibody: Human
Restrictions:	For Research Use only

## Handling

---

Format:	Lyophilized
Reconstitution:	Distilled water
Concentration:	Lot specific
Buffer:	Lyophilized from PBS with 2 % sucrose
Handling Advice:	Avoid repeat freeze-thaw cycles.
Storage:	4 °C,-20 °C
Storage Comment:	Long term: -20°C, the use of 50% glycerol is recommended if storing aliquots in -20°C for long term use (up to 1 year)  Short term (less than 1 week): 4°C. Avoid freeze-thaw cycles.



**Image 1.**