



[Go to Product page](#)

Datasheet for ABIN6743622
anti-SAE1 antibody (AA 71-120)

1 Image

Overview

Quantity:	100 µL
Target:	SAE1
Binding Specificity:	AA 71-120
Reactivity:	Human, Mouse, Rat, Cow, Dog, Rabbit, Monkey, Horse, Pig
Host:	Rabbit
Clonality:	Polyclonal
Conjugate:	This SAE1 antibody is un-conjugated
Application:	Western Blotting (WB)

Product Details

Immunogen:	Synthetic peptide located between aa71-120 of human SAE1 (Q9UBE0, NP_005491). Percent identity by BLAST analysis: Human, Chimpanzee, Gorilla, Orangutan, Marmoset, Mouse, Rat, Panda, Dog, Bovine, Rabbit, Horse, Pig (100%), Galago, Elephant, Opossum, Guinea pig, Platypus (92%), Bat (85%). Type of Immunogen: Synthetic peptide
Specificity:	Human SAE1
Predicted Reactivity:	Percent identity by BLAST analysis: Human, Mouse, Dog, Bovine, Rabbit, Horse (100%) Rat, Guinea pig (92%).
Purification:	Immunoaffinity purified

Target Details

Target: SAE1

Alternative Name: SAE1 ([SAE1 Products](#))

Background: Name/Gene ID: SAE1

Synonyms: SAE1, Activator of SUMO1, AOS1, UBLE1A, HSPC140, SUA1

Gene ID: 10055

NCBI Accession: [NP_005491](#)

UniProt: [Q9UBE0](#)

Application Details

Application Notes: Approved: WB (0.2 - 1 µg/mL)

Usage: Western Blot: Suggested dilution at 1 µg/mL in 5 % skim milk / PBS buffer, and HRP conjugated anti-Rabbit IgG should be diluted in 1: 50,000 - 100,000 as secondary antibody.

Comment: Target Species of Antibody: Human

Restrictions: For Research Use only

Handling

Format: Lyophilized

Reconstitution: Distilled water

Concentration: Lot specific

Buffer: Lyophilized from PBS with 2 % sucrose

Handling Advice: Avoid repeat freeze-thaw cycles.

Storage: 4 °C, -20 °C

Storage Comment: Long term: -20°C, the use of 50% glycerol is recommended if storing aliquots in -20°C for long term use (up to 1 year)

Short term (less than 1 week): 4°C. Avoid freeze-thaw cycles.

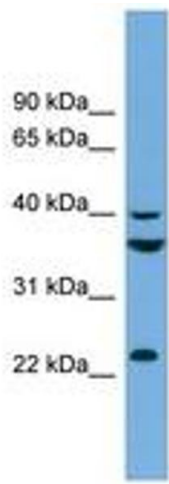


Image 1.