

Datasheet for ABIN6743634  
**anti-CRYGC antibody (AA 71-120)**



[Go to Product page](#)

1 Image

## Overview

Quantity:	100 µL
Target:	CRYGC
Binding Specificity:	AA 71-120
Reactivity:	Human, Rat, Rabbit
Host:	Rabbit
Clonality:	Polyclonal
Conjugate:	This CRYGC antibody is un-conjugated
Application:	Western Blotting (WB)

## Product Details

Immunogen:	Synthetic peptide located between aa71-120 of human CRYGC (P07315, NP_066269). Percent identity by BLAST analysis: Human, Chimpanzee, Gorilla (100%), Gibbon, Monkey, Marmoset, Dog, Pig (92%), Galago, Rabbit, Horse (85%), Rat (78%).  Type of Immunogen: Synthetic peptide
Specificity:	Human CRYGC
Predicted Reactivity:	Percent identity by BLAST analysis: Pig (92%) Rabbit (85%).
Purification:	Immunoaffinity purified

## Target Details

Target:	CRYGC
---------	-------

## Target Details

---

Alternative Name:	CRYGC / CCL ( <a href="#">CRYGC Products</a> )
Background:	Name/Gene ID: CRYGC  Synonyms: CRYGC, CCL, Crystallin, gamma C, Gamma-C-crystallin, Gamma-crystallin 2-1, Gamma-crystallin C, CRYG3, Crystallin, gamma-3, Gamma crystallin a, Gamma-crystallin 3
Gene ID:	1420
NCBI Accession:	<a href="#">NP_066269</a>
UniProt:	<a href="#">P07315</a>

## Application Details

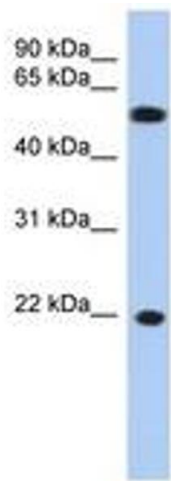
---

Application Notes:	Approved: WB (0.2 - 1 µg/mL)  Usage: Western Blot: Suggested dilution at 1 µg/mL in 5 % skim milk / PBS buffer, and HRP conjugated anti-Rabbit IgG should be diluted in 1: 50,000 - 100,000 as secondary antibody.
Comment:	Target Species of Antibody: Human
Restrictions:	For Research Use only

## Handling

---

Format:	Lyophilized
Reconstitution:	Distilled water
Concentration:	Lot specific
Buffer:	Lyophilized from PBS with 2 % sucrose
Handling Advice:	Avoid repeat freeze-thaw cycles.
Storage:	4 °C, -20 °C
Storage Comment:	Long term: -20°C, the use of 50% glycerol is recommended if storing aliquots in -20°C for long term use (up to 1 year)  Short term (less than 1 week): 4°C. Avoid freeze-thaw cycles.



**Image 1.**