

Datasheet for ABIN6743637  
**anti-TRIB1 antibody (AA 215-264)**[Go to Product page](#)

## 1 Image

## Overview

Quantity:	100 µL
Target:	TRIB1
Binding Specificity:	AA 215-264
Reactivity:	Human, Mouse, Cow, Rat, Horse, Guinea Pig, Monkey, Rabbit, Bat, Xenopus laevis
Host:	Rabbit
Clonality:	Polyclonal
Conjugate:	This TRIB1 antibody is un-conjugated
Application:	Western Blotting (WB)

## Product Details

Immunogen:	Synthetic peptide located between aa215-264 of human TRIB1 (Q96RU8, NP_079471). Percent identity by BLAST analysis: Human, Gorilla, Monkey, Galago, Marmoset, Mouse, Rat, Elephant, Bovine, Bat, Rabbit, Horse, Opossum, Guinea pig, Platypus, Lizard, Xenopus (100%), Gibbon, Dog (92%).  Type of Immunogen: Synthetic peptide
Specificity:	Human TRIB1
Predicted Reactivity:	Percent identity by BLAST analysis: Human, Mouse, Rat, Bovine, Rabbit, Horse, Guinea pig, Xenopus (100%) Dog (92%).
Purification:	Immunoaffinity purified

## Target Details

Target:	TRIB1
Alternative Name:	TRIB1 ( <a href="#">TRIB1 Products</a> )
Background:	Name/Gene ID: TRIB1 Subfamily: C8FW  Synonyms: TRIB1, GIG-2, TRB1, Tribbles-like protein 1, TRB-1, Tribbles homolog 1, C8FW, GIG2, SKIP1
Gene ID:	10221
NCBI Accession:	<a href="#">NP_079471</a>
UniProt:	<a href="#">Q96RU8</a>
Pathways:	<a href="#">Smooth Muscle Cell Migration</a>

## Application Details

Application Notes:	Approved: WB (0.2 - 1 µg/mL)  Usage: Western Blot: Suggested dilution at 1 µg/mL in 5 % skim milk / PBS buffer, and HRP conjugated anti-Rabbit IgG should be diluted in 1: 50,000 - 100,000 as secondary antibody.  Not recommended for: IHC-P
Comment:	Target Species of Antibody: Human
Restrictions:	For Research Use only

## Handling

Format:	Lyophilized
Reconstitution:	Distilled water
Concentration:	Lot specific
Buffer:	Lyophilized from PBS with 2 % sucrose
Handling Advice:	Avoid repeat freeze-thaw cycles.
Storage:	4 °C,-20 °C
Storage Comment:	Long term: -20°C, the use of 50% glycerol is recommended if storing aliquots in -20°C for long

Handling

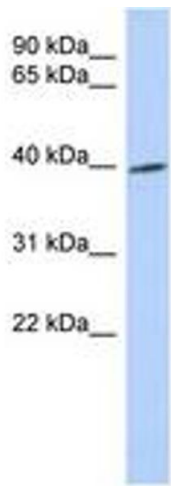
---

term use (up to 1 year)

Short term (less than 1 week): 4°C. Avoid freeze-thaw cycles.

Images

---



**Image 1.**