



[Go to Product page](#)

Datasheet for ABIN6743639

anti-SERPINB1 antibody (AA 215-264)

1 Image

Overview

Quantity:	100 µL
Target:	SERPINB1
Binding Specificity:	AA 215-264
Reactivity:	Human, Monkey, Pig, Sheep
Host:	Rabbit
Clonality:	Polyclonal
Conjugate:	This SERPINB1 antibody is un-conjugated
Application:	Western Blotting (WB)

Product Details

Immunogen:	Synthetic peptide located between aa215-264 of human SERPINB1 (P30740, NP_109591). Percent identity by BLAST analysis: Human, Chimpanzee, Gorilla, Gibbon, Monkey (100%), Mouse, Rat, Hamster, Elephant, Panda, Dog (92%), Marmoset, Sheep, Bovine (85%), Horse (84%). Type of Immunogen: Synthetic peptide
Specificity:	Human SERPINB1
Predicted Reactivity:	Percent identity by BLAST analysis: Human (100%) Rat (92%) Sheep (85%).
Purification:	Immunoaffinity purified

Target Details

Target:	SERPINB1
Alternative Name:	SERPINB1 (SERPINB1 Products)
Background:	Name/Gene ID: SERPINB1 Synonyms: SERPINB1, Anti-elastase, EI, LEI, Leukocyte elastase inhibitor, Peptidase inhibitor 2, PI-2, MNEI, ELANH2, M/NEI, PI2, Serpin B1
Gene ID:	1992
NCBI Accession:	NP_109591
UniProt:	P30740

Application Details

Application Notes:	Approved: WB (0.2 - 1 µg/mL) Usage: Western Blot: Suggested dilution at 1 µg/mL in 5 % skim milk / PBS buffer, and HRP conjugated anti-Rabbit IgG should be diluted in 1: 50,000 - 100,000 as secondary antibody.
Comment:	Target Species of Antibody: Human
Restrictions:	For Research Use only

Handling

Format:	Lyophilized
Reconstitution:	Distilled water
Concentration:	Lot specific
Buffer:	Lyophilized from PBS with 2 % sucrose
Handling Advice:	Avoid repeat freeze-thaw cycles.
Storage:	4 °C, -20 °C
Storage Comment:	Long term: -20°C, the use of 50% glycerol is recommended if storing aliquots in -20°C for long term use (up to 1 year) Short term (less than 1 week): 4°C. Avoid freeze-thaw cycles.

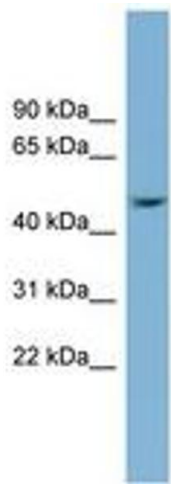


Image 1.