



[Go to Product page](#)

Datasheet for ABIN6743641  
**anti-C1QTNF4 antibody (C-Term)**

1 Image

Overview

Quantity:	100 µL
Target:	C1QTNF4
Binding Specificity:	C-Term
Reactivity:	Human, Mouse, Rat, Dog, Guinea Pig, Horse, Rabbit, Zebrafish (Danio rerio), Monkey, Pig
Host:	Rabbit
Clonality:	Polyclonal
Conjugate:	This C1QTNF4 antibody is un-conjugated
Application:	Western Blotting (WB)

Product Details

Immunogen:	Synthetic peptide from C-Terminus of human C1QTNF4 (Q9BXJ3, NP_114115). Percent identity by BLAST analysis: Human, Chimpanzee, Gorilla, Gibbon, Monkey, Galago, Marmoset, Mouse, Rat, Elephant, Panda, Dog, Rabbit, Horse, Pig, Guinea pig, Platypus, Lizard (100%), Xenopus (92%), Salmon, Stickleback, Zebrafish (83%).  Type of Immunogen: Synthetic peptide
Specificity:	Human C1QTNF4 / CTRP4
Predicted Reactivity:	Percent identity by BLAST analysis: Rat, Dog, Rabbit, Horse (100%) Xenopus (92%) Zebrafish (83%).
Purification:	Immunoaffinity purified

## Target Details

---

Target:	C1QTNF4
Alternative Name:	C1QTNF4 / CTRP4 ( <a href="#">C1QTNF4 Products</a> )
Background:	Name/Gene ID: C1QTNF4  Synonyms: C1QTNF4, ZACRP4, CTRP4
Gene ID:	114900
NCBI Accession:	<a href="#">NP_114115</a>
UniProt:	<a href="#">Q9BXJ3</a>

## Application Details

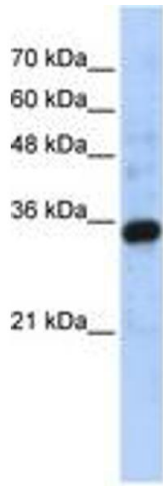
---

Application Notes:	Approved: WB (0.2 - 1 µg/mL)  Usage: Western Blot: Suggested dilution at 1 µg/mL in 5 % skim milk / PBS buffer, and HRP conjugated anti-Rabbit IgG should be diluted in 1: 50,000 - 100,000 as secondary antibody.
Comment:	Target Species of Antibody: Human
Restrictions:	For Research Use only

## Handling

---

Format:	Lyophilized
Reconstitution:	Distilled water
Concentration:	Lot specific
Buffer:	Lyophilized from PBS with 2 % sucrose
Handling Advice:	Avoid repeat freeze-thaw cycles.
Storage:	4 °C, -20 °C
Storage Comment:	Long term: -20°C, the use of 50% glycerol is recommended if storing aliquots in -20°C for long term use (up to 1 year)  Short term (less than 1 week): 4°C. Avoid freeze-thaw cycles.



**Image 1.**