

Datasheet for ABIN6743642  
**anti-CTRP7 antibody (AA 143-192)**[Go to Product page](#)

## 1 Image

## Overview

Quantity:	100 µL
Target:	CTRP7 (C1QTNF7)
Binding Specificity:	AA 143-192
Reactivity:	Human, Mouse, Rat, Dog, Horse, Pig, Rabbit, Cow, Monkey, Bat
Host:	Rabbit
Clonality:	Polyclonal
Conjugate:	This CTRP7 antibody is un-conjugated
Application:	Western Blotting (WB)

## Product Details

Immunogen:	Synthetic peptide located between aa143-192 of human C1QTNF7 (Q9BXJ2, NP_114117). Percent identity by BLAST analysis: Human, Chimpanzee, Gorilla, Gibbon, Monkey, Galago, Marmoset, Mouse, Rat, Panda, Dog, Bovine, Bat, Rabbit, Horse, Pig (100%), Elephant, Opossum, Guinea pig, Turkey, Zebra finch, Chicken, Platypus (92%), Xenopus, Zebrafish (85%).  Type of Immunogen: Synthetic peptide
Specificity:	Human C1QTNF7 / CTRP7
Predicted Reactivity:	Percent identity by BLAST analysis: Mouse, Rat, Dog, Bovine, Horse, Pig (100%) Guinea pig, Chicken (92%).
Purification:	Immunoaffinity purified

## Target Details

Target:	CTRP7 (C1QTNF7)
Alternative Name:	C1QTNF7 / CTRP7 ( <a href="#">C1QTNF7 Products</a> )
Background:	Name/Gene ID: C1QTNF7  Synonyms: C1QTNF7, CTRP7, ZACRP7
Gene ID:	114905
NCBI Accession:	<a href="#">NP_114117</a>
UniProt:	<a href="#">Q9BXJ2</a>

## Application Details

Application Notes:	Approved: WB (0.2 - 1 µg/mL)  Usage: Western Blot: Suggested dilution at 1 µg/mL in 5 % skim milk / PBS buffer, and HRP conjugated anti-Rabbit IgG should be diluted in 1: 50,000 - 100,000 as secondary antibody.
Comment:	Target Species of Antibody: Human
Restrictions:	For Research Use only

## Handling

Format:	Lyophilized
Reconstitution:	Distilled water
Concentration:	Lot specific
Buffer:	Lyophilized from PBS with 2 % sucrose
Handling Advice:	Avoid repeat freeze-thaw cycles.
Storage:	4 °C, -20 °C
Storage Comment:	Long term: -20°C, the use of 50% glycerol is recommended if storing aliquots in -20°C for long term use (up to 1 year)  Short term (less than 1 week): 4°C. Avoid freeze-thaw cycles.

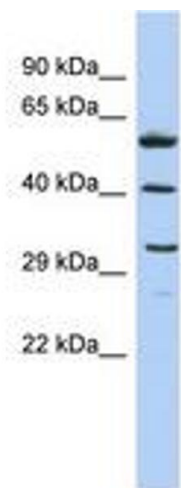


Image 1.