



[Go to Product page](#)

Datasheet for ABIN6743645  
**anti-RHPN1 antibody (AA 503-552)**

1 Image

Overview

Quantity:	100 µL
Target:	RHPN1
Binding Specificity:	AA 503-552
Reactivity:	Human, Zebrafish (Danio rerio), Pig
Host:	Rabbit
Clonality:	Polyclonal
Conjugate:	This RHPN1 antibody is un-conjugated
Application:	Western Blotting (WB)

Product Details

Immunogen:	Synthetic peptide located between aa503-552 of human RHPN1 (Q8TCX5-2, NP_443156). Percent identity by BLAST analysis: Human, Chimpanzee, Gorilla (100%), Galago, Mouse, Rat, Elephant, Dog, Bovine, Horse, Opossum, Guinea pig (92%), Pig, Turkey, Zebra finch, Chicken, Zebrafish (85%), Platypus (84%).  Type of Immunogen: Synthetic peptide
Specificity:	Human RHPN1
Predicted Reactivity:	Percent identity by BLAST analysis: Human (100%) Mouse, Rat, Dog, Bovine, Horse, Guinea pig (92%) Pig, Chicken, Zebrafish (85%).
Purification:	Immunoaffinity purified

## Target Details

---

Target:	RHPN1
Alternative Name:	RHPN1 / RHOPHILIN ( <a href="#">RHPN1 Products</a> )
Background:	Name/Gene ID: RHPN1  Synonyms: RHPN1, GTP-Rho-binding protein 1, KIAA1929, Rhophilin 1, RHPN, ODF5, RHOPHILIN, Rhophilin-1
Gene ID:	114822
NCBI Accession:	<a href="#">NP_443156</a>
UniProt:	<a href="#">Q8TCX5</a>

## Application Details

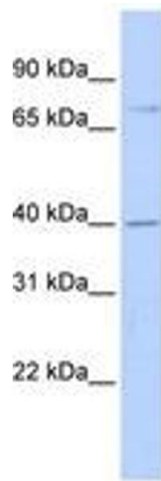
---

Application Notes:	Approved: WB (0.2 - 1 µg/mL)  Usage: Western Blot: Suggested dilution at 1 µg/mL in 5 % skim milk / PBS buffer, and HRP conjugated anti-Rabbit IgG should be diluted in 1: 50,000 - 100,000 as secondary antibody.
Comment:	Target Species of Antibody: Human
Restrictions:	For Research Use only

## Handling

---

Format:	Lyophilized
Reconstitution:	Distilled water
Concentration:	Lot specific
Buffer:	Lyophilized from PBS with 2 % sucrose
Handling Advice:	Avoid repeat freeze-thaw cycles.
Storage:	4 °C, -20 °C
Storage Comment:	Long term: -20°C, the use of 50% glycerol is recommended if storing aliquots in -20°C for long term use (up to 1 year)  Short term (less than 1 week): 4°C. Avoid freeze-thaw cycles.



**Image 1.**