



[Go to Product page](#)

Datasheet for ABIN6743649
anti-WDR89 antibody (C-Term)

1 Image

Overview

Quantity:	100 µL
Target:	WDR89
Binding Specificity:	C-Term
Reactivity:	Human, Mouse, Rat, Monkey, Xenopus laevis
Host:	Rabbit
Clonality:	Polyclonal
Conjugate:	This WDR89 antibody is un-conjugated
Application:	Western Blotting (WB)

Product Details

Immunogen:	Synthetic peptide from C-Terminus of human WDR89 (Q96FK6, NP_542397). Percent identity by BLAST analysis: Human, Chimpanzee, Gorilla, Orangutan, Gibbon, Monkey, Marmoset, Panda, Xenopus (100%), Galago, Dog, Bovine, Rabbit, Horse, Pig, Opossum (92%), Zebra finch (90%), Mouse, Elephant, Lizard (85%), Rat (84%). Type of Immunogen: Synthetic peptide
Specificity:	Human WDR89
Predicted Reactivity:	Percent identity by BLAST analysis: Human (100%) Dog, Bovine (92%) Xenopus (91%) Mouse (85%) Rat (84%).
Purification:	Immunoaffinity purified

Target Details

Target: WDR89

Alternative Name: WDR89 ([WDR89 Products](#))

Background: Name/Gene ID: WDR89

Synonyms: WDR89, C14orf150, MSTP050, WD repeat domain 89

Gene ID: 112840

NCBI Accession: [NP_542397](#)

UniProt: [Q96FK6](#)

Application Details

Application Notes: Approved: WB (0.2 - 1 µg/mL)

Usage: Western Blot: Suggested dilution at 1 µg/mL in 5 % skim milk / PBS buffer, and HRP conjugated anti-Rabbit IgG should be diluted in 1: 50,000 - 100,000 as secondary antibody.

Comment: Target Species of Antibody: Human

Restrictions: For Research Use only

Handling

Format: Lyophilized

Reconstitution: Distilled water

Concentration: Lot specific

Buffer: Lyophilized from PBS with 2 % sucrose

Handling Advice: Avoid repeat freeze-thaw cycles.

Storage: 4 °C, -20 °C

Storage Comment: Long term: -20°C, the use of 50% glycerol is recommended if storing aliquots in -20°C for long term use (up to 1 year)

Short term (less than 1 week): 4°C. Avoid freeze-thaw cycles.

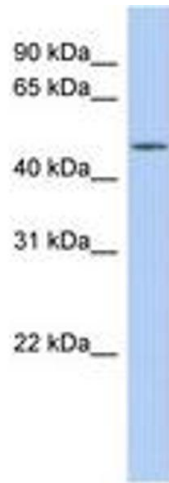


Image 1.