



[Go to Product page](#)

Datasheet for ABIN6743653
anti-PRRC1 antibody (AA 287-336)

1 Image

Overview

Quantity:	100 µL
Target:	PRRC1
Binding Specificity:	AA 287-336
Reactivity:	Human, Mouse, Rat, Cow, Dog, Guinea Pig, Horse, Rabbit, Chicken, Monkey, Pig, Xenopus laevis
Host:	Rabbit
Clonality:	Polyclonal
Conjugate:	This PRRC1 antibody is un-conjugated
Application:	Western Blotting (WB)

Product Details

Immunogen:	Synthetic peptide located between aa287-336 of human PRRC1 (Q96M27, NP_570721). Percent identity by BLAST analysis: Human, Chimpanzee, Gorilla, Gibbon, Monkey, Galago, Marmoset, Mouse, Rat, Elephant, Panda, Dog, Bovine, Rabbit, Horse, Pig, Guinea pig, Zebra finch, Chicken, Xenopus (100%), Bat, Opossum, Stickleback, Zebrafish (92%). Type of Immunogen: Synthetic peptide
Specificity:	Human PRRC1
Predicted Reactivity:	Percent identity by BLAST analysis: Human, Mouse, Rat, Dog, Bovine, Pig, Guinea pig, Chicken (100%) Zebrafish (92%).
Purification:	Immunoaffinity purified

Target Details

Target: PRRC1

Alternative Name: PRRC1 ([PRRC1 Products](#))

Background: Name/Gene ID: PRRC1

Synonyms: PRRC1, Protein PRRC1, Proline-rich coiled-coil 1

Gene ID: 133619

NCBI Accession: [NP_570721](#)

UniProt: [Q96M27](#)

Application Details

Application Notes: Approved: WB (0.2 - 1 µg/mL)

Usage: Western Blot: Suggested dilution at 1 µg/mL in 5 % skim milk / PBS buffer, and HRP conjugated anti-Rabbit IgG should be diluted in 1: 50,000 - 100,000 as secondary antibody.

Comment: Target Species of Antibody: Human

Restrictions: For Research Use only

Handling

Format: Lyophilized

Reconstitution: Distilled water

Concentration: Lot specific

Buffer: Lyophilized from PBS with 2 % sucrose

Handling Advice: Avoid repeat freeze-thaw cycles.

Storage: 4 °C, -20 °C

Storage Comment: Long term: -20°C, the use of 50% glycerol is recommended if storing aliquots in -20°C for long term use (up to 1 year)

Short term (less than 1 week): 4°C. Avoid freeze-thaw cycles.

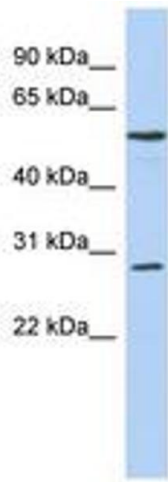


Image 1.