

Datasheet for ABIN6743656
anti-DHRS1 antibody (AA 36-85)[Go to Product page](#)

1 Image

Overview

Quantity:	100 µL
Target:	DHRS1
Binding Specificity:	AA 36-85
Reactivity:	Human, Horse, Rabbit, Monkey
Host:	Rabbit
Clonality:	Polyclonal
Conjugate:	This DHRS1 antibody is un-conjugated
Application:	Western Blotting (WB)

Product Details

Immunogen:	Synthetic peptide located between aa36-85 of human DHRS1 (Q96LJ7, NP_612461). Percent identity by BLAST analysis: Human, Gorilla, Orangutan, Gibbon, Monkey, Galago, Marmoset, Panda, Rabbit (100%), Mouse, Rat, Hamster, Elephant, Bovine, Guinea pig (92%), Bat, Horse, Pig, Opossum (84%). Type of Immunogen: Synthetic peptide
Specificity:	Human DHRS1
Predicted Reactivity:	Percent identity by BLAST analysis: Human (100%) Mouse, Rat, Bovine, Guinea pig (92%) Horse (84%).
Purification:	Immunoaffinity purified

Target Details

Target:	DHRS1
Alternative Name:	DHRS1 (DHRS1 Products)
Background:	Name/Gene ID: DHRS1 Synonyms: DHRS1, SDR19C1
Gene ID:	115817
NCBI Accession:	NP_612461
UniProt:	Q96LJ7

Application Details

Application Notes:	Approved: WB (0.2 - 1 µg/mL) Usage: Western Blot: Suggested dilution at 1 µg/mL in 5 % skim milk / PBS buffer, and HRP conjugated anti-Rabbit IgG should be diluted in 1: 50,000 - 100,000 as secondary antibody.
Comment:	Target Species of Antibody: Human
Restrictions:	For Research Use only

Handling

Format:	Lyophilized
Reconstitution:	Distilled water
Concentration:	Lot specific
Buffer:	Lyophilized from PBS with 2 % sucrose
Handling Advice:	Avoid repeat freeze-thaw cycles.
Storage:	4 °C, -20 °C
Storage Comment:	Long term: -20°C, the use of 50% glycerol is recommended if storing aliquots in -20°C for long term use (up to 1 year) Short term (less than 1 week): 4°C. Avoid freeze-thaw cycles.

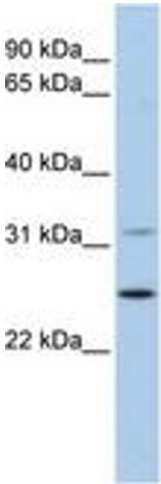


Image 1.