



[Go to Product page](#)

Datasheet for ABIN6743659  
**anti-C7orf31 antibody (N-Term)**

1 Image

Overview

Quantity:	100 µL
Target:	C7orf31
Binding Specificity:	N-Term
Reactivity:	Human, Mouse, Rat, Hamster, Monkey, Rabbit
Host:	Rabbit
Clonality:	Polyclonal
Conjugate:	This C7orf31 antibody is un-conjugated
Application:	Western Blotting (WB)

Product Details

Immunogen:	Synthetic peptide from N-Terminus of human C7orf31 (Q8N865, NP_620166). Percent identity by BLAST analysis: Human, Monkey, Mouse, Rat, Hamster, Panda (100%), Gibbon, Dog, Bovine (92%), Galago, Rabbit, Horse, Guinea pig (85%), Bat (84%).  Type of Immunogen: Synthetic peptide
Specificity:	Human C7orf31
Predicted Reactivity:	Percent identity by BLAST analysis: Human (100%) Rabbit (85%).
Purification:	Immunoaffinity purified

Target Details

Target:	C7orf31
---------	---------

## Target Details

---

Alternative Name: C7orf31 ([C7orf31 Products](#))

Background: Name/Gene ID: C7orf31

Synonyms: C7orf31

Gene ID: 136895

NCBI Accession: [NP\\_620166](#)

UniProt: [Q8N865](#)

## Application Details

---

Application Notes: Approved: WB (0.2 - 1 µg/mL)

Usage: Western Blot: Suggested dilution at 1 µg/mL in 5 % skim milk / PBS buffer, and HRP conjugated anti-Rabbit IgG should be diluted in 1: 50,000 - 100,000 as secondary antibody.

Comment: Target Species of Antibody: Human

Restrictions: For Research Use only

## Handling

---

Format: Lyophilized

Reconstitution: Distilled water

Concentration: Lot specific

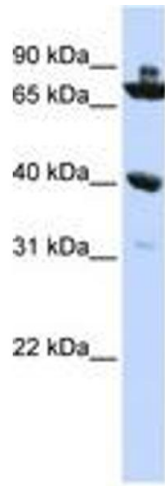
Buffer: Lyophilized from PBS with 2 % sucrose

Handling Advice: Avoid repeat freeze-thaw cycles.

Storage: 4 °C, -20 °C

Storage Comment: Long term: -20°C, the use of 50% glycerol is recommended if storing aliquots in -20°C for long term use (up to 1 year)

Short term (less than 1 week): 4°C. Avoid freeze-thaw cycles.



**Image 1.**