



[Go to Product page](#)

Datasheet for ABIN6743672
anti-NXNL2 antibody (AA 71-101)

1 Image

Overview

Quantity:	100 µL
Target:	NXNL2
Binding Specificity:	AA 71-101
Reactivity:	Human
Host:	Rabbit
Clonality:	Polyclonal
Conjugate:	This NXNL2 antibody is un-conjugated
Application:	Western Blotting (WB)

Product Details

Immunogen:	Synthetic peptide located between aa71-101 of human NXNL2 (NP_660326). Percent identity by BLAST analysis: Human (100%), Gibbon (92%), Gorilla, Galago, Marmoset, Mouse, Rat, Bovine, Rabbit, Horse (90%). Type of Immunogen: Synthetic peptide
Specificity:	Human NXNL2
Predicted Reactivity:	Percent identity by BLAST analysis: Human (100%) Mouse, Rat, Bovine, Horse (90%).
Purification:	Immunoaffinity purified

Target Details

Target:	NXNL2
---------	-------

Target Details

Alternative Name: [NXNL2 \(NXNL2 Products\)](#)

Background: Name/Gene ID: NXNL2

Synonyms: NXNL2, C9orf121, Nucleoredoxin-like protein 2, RDCVF2, Nucleoredoxin-like 2

Gene ID: 158046

NCBI Accession: [NP_660326](#)

UniProt: [Q5VZ03](#)

Application Details

Application Notes: Approved: WB (0.2 - 1 µg/mL)

Usage: Western Blot: Suggested dilution at 1 µg/mL in 5 % skim milk / PBS buffer, and HRP conjugated anti-Rabbit IgG should be diluted in 1: 50,000 - 100,000 as secondary antibody.

Comment: Target Species of Antibody: Human

Restrictions: For Research Use only

Handling

Format: Lyophilized

Reconstitution: Distilled water

Concentration: Lot specific

Buffer: Lyophilized from PBS with 2 % sucrose

Handling Advice: Avoid repeat freeze-thaw cycles.

Storage: 4 °C, -20 °C

Storage Comment: Long term: -20°C, the use of 50% glycerol is recommended if storing aliquots in -20°C for long term use (up to 1 year)
Short term (less than 1 week): 4°C. Avoid freeze-thaw cycles.

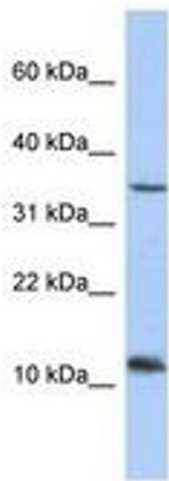


Image 1.