



[Go to Product page](#)

Datasheet for ABIN6743673
anti-STOML3 antibody (AA 35-84)

1 Image

Overview

Quantity:	100 µL
Target:	STOML3
Binding Specificity:	AA 35-84
Reactivity:	Human, Mouse, Rabbit, Cow, Guinea Pig, Horse, Monkey
Host:	Rabbit
Clonality:	Polyclonal
Conjugate:	This STOML3 antibody is un-conjugated
Application:	Western Blotting (WB)

Product Details

Immunogen:	Synthetic peptide located between aa35-84 of human STOML3 (Q8TAV4, NP_660329). Percent identity by BLAST analysis: Human, Chimpanzee, Gorilla, Monkey, Galago, Mouse, Elephant, Bovine, Rabbit, Horse, Guinea pig (100%), Panda, Dog, Pig, Opossum (92%), Platypus (85%). Type of Immunogen: Synthetic peptide
Specificity:	Human STOML3
Predicted Reactivity:	Percent identity by BLAST analysis: Human, Mouse, Bovine, Rabbit, Horse, Guinea pig (100%) Dog (92%).
Purification:	Immunoaffinity purified

Target Details

Target:	STOML3
Alternative Name:	STOML3 (STOML3 Products)
Background:	Name/Gene ID: STOML3 Synonyms: STOML3, Epb7.2l, SLP-3, SRO, Stomatin-like protein 3, Protein 7.2b, Stomatin (EPB72)-like 3
Gene ID:	161003
NCBI Accession:	NP_660329
UniProt:	Q8TAV4

Application Details

Application Notes:	Approved: WB (0.2 - 1 µg/mL) Usage: Western Blot: Suggested dilution at 1 µg/mL in 5 % skim milk / PBS buffer, and HRP conjugated anti-Rabbit IgG should be diluted in 1: 50,000 - 100,000 as secondary antibody.
Comment:	Target Species of Antibody: Human
Restrictions:	For Research Use only

Handling

Format:	Lyophilized
Reconstitution:	Distilled water
Concentration:	Lot specific
Buffer:	Lyophilized from PBS with 2 % sucrose
Handling Advice:	Avoid repeat freeze-thaw cycles.
Storage:	4 °C, -20 °C
Storage Comment:	Long term: -20°C, the use of 50% glycerol is recommended if storing aliquots in -20°C for long term use (up to 1 year) Short term (less than 1 week): 4°C. Avoid freeze-thaw cycles.

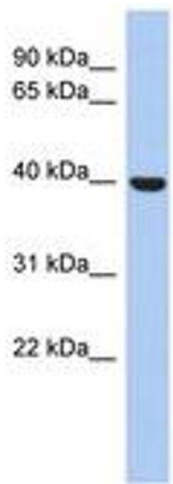


Image 1.