



Datasheet for ABIN6743683  
**anti-C1orf131 antibody (AA 107-156)**



[Go to Product page](#)

1 Image

Overview

Quantity:	100 µL
Target:	C1orf131
Binding Specificity:	AA 107-156
Reactivity:	Human
Host:	Rabbit
Clonality:	Polyclonal
Conjugate:	This C1orf131 antibody is un-conjugated
Application:	Western Blotting (WB)

Product Details

Immunogen:	Synthetic peptide located between aa107-156 of human C1orf131 (Q8NDD1, NP_689592). Percent identity by BLAST analysis: Human (100%), Gibbon, Monkey (92%), Gorilla (85%).  Type of Immunogen: Synthetic peptide
Specificity:	Human C1orf131
Predicted Reactivity:	Percent identity by BLAST analysis: Human (100%).
Purification:	Immunoaffinity purified

Target Details

Target:	C1orf131
Alternative Name:	C1orf131 ( <a href="#">C1orf131 Products</a> )

## Target Details

---

Background: Name/Gene ID: C1orf131

Synonyms: C1orf131

Gene ID: 128061

NCBI Accession: [NP\\_689592](#)

UniProt: [Q8NDD1](#)

## Application Details

---

Application Notes: Approved: WB (0.2 - 1 µg/mL)

Usage: Western Blot: Suggested dilution at 1 µg/mL in 5 % skim milk / PBS buffer, and HRP conjugated anti-Rabbit IgG should be diluted in 1: 50,000 - 100,000 as secondary antibody.

Comment: Target Species of Antibody: Human

Restrictions: For Research Use only

## Handling

---

Format: Lyophilized

Reconstitution: Distilled water

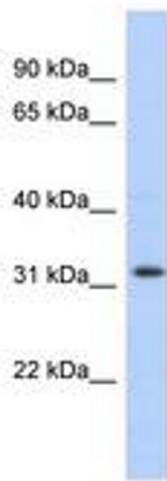
Concentration: Lot specific

Buffer: Lyophilized from PBS with 2 % sucrose

Handling Advice: Avoid repeat freeze-thaw cycles.

Storage: 4 °C, -20 °C

Storage Comment: Long term: -20°C, the use of 50% glycerol is recommended if storing aliquots in -20°C for long term use (up to 1 year)  
Short term (less than 1 week): 4°C. Avoid freeze-thaw cycles.



**Image 1.**