



[Go to Product page](#)

Datasheet for ABIN6743700
anti-C12ORF50 antibody (AA 35-84)

1 Image

Overview

Quantity:	100 µL
Target:	C12ORF50
Binding Specificity:	AA 35-84
Reactivity:	Human, Cow, Dog, Guinea Pig, Rabbit, Bat, Pig
Host:	Rabbit
Clonality:	Polyclonal
Conjugate:	This C12ORF50 antibody is un-conjugated
Application:	Western Blotting (WB)

Product Details

Immunogen:	Synthetic peptide located between aa35-84 of human C12orf50 (Q8NA57, NP_689802). Percent identity by BLAST analysis: Human, Chimpanzee, Gorilla, Galago, Dog, Bovine, Bat, Rabbit, Pig, Opossum, Guinea pig (100%), Monkey (92%), Rat, Elephant (90%), Gibbon (85%), Turkey, Zebra finch (83%). Type of Immunogen: Synthetic peptide
Specificity:	Human C12orf50
Predicted Reactivity:	Percent identity by BLAST analysis: Human, Dog, Rabbit, Pig, Guinea pig (100%).
Purification:	Immunoaffinity purified

Target Details

Target:	C12ORF50
Alternative Name:	C12orf50 (C12ORF50 Products)
Background:	Name/Gene ID: C12orf50 Synonyms: C12orf50
Gene ID:	160419
NCBI Accession:	NP_689802
UniProt:	Q8NA57

Application Details

Application Notes:	Approved: WB (0.2 - 1 µg/mL) Usage: Western Blot: Suggested dilution at 1 µg/mL in 5 % skim milk / PBS buffer, and HRP conjugated anti-Rabbit IgG should be diluted in 1: 50,000 - 100,000 as secondary antibody.
Comment:	Target Species of Antibody: Human
Restrictions:	For Research Use only

Handling

Format:	Lyophilized
Reconstitution:	Distilled water
Concentration:	Lot specific
Buffer:	Lyophilized from PBS with 2 % sucrose
Handling Advice:	Avoid repeat freeze-thaw cycles.
Storage:	4 °C, -20 °C
Storage Comment:	Long term: -20°C, the use of 50% glycerol is recommended if storing aliquots in -20°C for long term use (up to 1 year) Short term (less than 1 week): 4°C. Avoid freeze-thaw cycles.

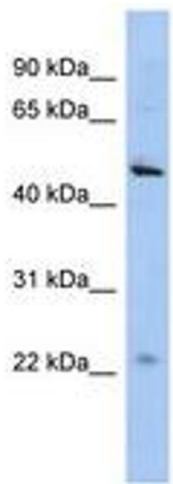


Image 1.