



[Go to Product page](#)

Datasheet for ABIN6743702
anti-CCDC63 antibody (AA 215-264)

1 Image

Overview

Quantity:	100 µL
Target:	CCDC63
Binding Specificity:	AA 215-264
Reactivity:	Human, Rat, Mouse, Dog, Guinea Pig, Rabbit, Pig, Monkey
Host:	Rabbit
Clonality:	Polyclonal
Conjugate:	This CCDC63 antibody is un-conjugated
Application:	Western Blotting (WB)

Product Details

Immunogen:	Synthetic peptide located between aa215-264 of human CCDC63 (Q8NA47, NP_689804). Percent identity by BLAST analysis: Human, Chimpanzee, Gibbon, Monkey, Galago, Mouse, Rat, Elephant, Rabbit, Pig, Guinea pig (100%), Bovine, Bat (92%), Dog (84%). Type of Immunogen: Synthetic peptide
Specificity:	Human CCDC63
Predicted Reactivity:	Percent identity by BLAST analysis: Human, Mouse, Rabbit, Pig, Guinea pig (100%) Dog (84%).
Purification:	Immunoaffinity purified

Target Details

Target:	CCDC63
---------	--------

Target Details

Alternative Name: [CCDC63 \(CCDC63 Products\)](#)

Background: Name/Gene ID: CCDC63

Synonyms: CCDC63

Gene ID: 160762

NCBI Accession: [NP_689804](#)

UniProt: [Q8NA47](#)

Application Details

Application Notes: Approved: WB (0.2 - 1 µg/mL)

Usage: Western Blot: Suggested dilution at 1 µg/mL in 5 % skim milk / PBS buffer, and HRP conjugated anti-Rabbit IgG should be diluted in 1: 50,000 - 100,000 as secondary antibody.

Comment: Target Species of Antibody: Human

Restrictions: For Research Use only

Handling

Format: Lyophilized

Reconstitution: Distilled water

Concentration: Lot specific

Buffer: Lyophilized from PBS with 2 % sucrose

Handling Advice: Avoid repeat freeze-thaw cycles.

Storage: 4 °C, -20 °C

Storage Comment: Long term: -20°C, the use of 50% glycerol is recommended if storing aliquots in -20°C for long term use (up to 1 year)

Short term (less than 1 week): 4°C. Avoid freeze-thaw cycles.

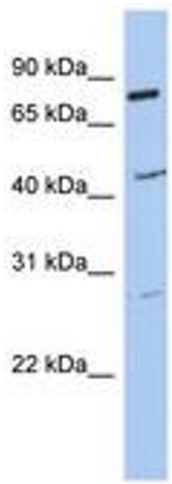


Image 1.